



TSX-V:MMY  
FSE:D7Q1

## Corporate Update

November 2008

# Fast Tracking Efficiently & Effectively

## Recent Announcements:

- Completed \$38.1 million private placement and convertible note financing. Monument is now fully funded to complete construction of the Selinsing gold mine project.
- Closed and received exchange approval for the acquisition of a 1.0 M tpy capacity ball mill in readiness for the planned stage II gold treatment plant extension.
- Appoints Kevin J. Wright, ACSM mining and mineral processing engineer, as General Manager of its Malaysian subsidiary Selinsing gold mine manager Sdn. Bhd. and Mine Manager for the Selinsing gold project.
- Announces production decision at the Selinsing project. Received provisional approval from the mines department of Pahang state to commence construction.

# Who runs Monument Mining?

## Robert Baldock, CEO of Monument Mining Ltd.

- A company builder with over 25 years experience in raising equity and project financing.
- Experienced in hands on project development and mill construction.
- Experienced M & A accountant and mining executive.
- Achieved grass roots discovery through Duketon Exploration NL (ASX) and built Duketon Gold Mine.
- Success with 6 other gold plants brought into production.



# This is Monument Today ...

## Emerging Malaysian gold producer under construction

Owens 100% **Selinsing Gold Deposit** - near production project.

- Historical production operation with infrastructure and key equipment on site.
- Selinsing presently contains 231,000 indicated & 388,000 inferred resource ounces of gold as filed in 43-101 reports.

Owens 100% **Damar Buffalo Reef Exploration**

- Current exploration success with further upside potential from ongoing drilling program.
- 155,800 indicated and 29,600 inferred historic resource ounces of gold as filed in Summary 43-101 report.\*



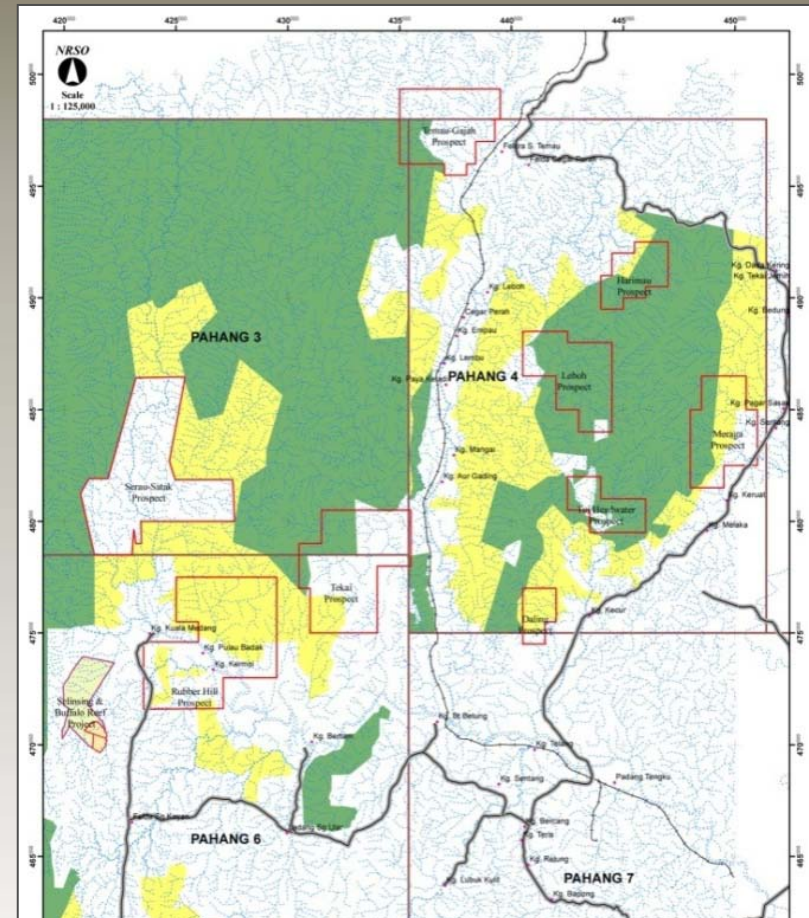
\* Historic Resource prepared by Avocet Mining PLC to JORC Standards. Summary NI 43-101 report filed on SEDAR 19 June 2007 was completed by Orequest Consultants Ltd.



# ... with Growth Potential for Tomorrow

## Monument's Expansion Program

- Signed Letter Of Intent ("LOI") to acquire 32,000 acres of prospective land adjacent to Selinsing and Damar Buffalo Reef.
- Building on knowledge in the immediate surrounding area of Selinsing and Damar Buffalo Reef by acquiring \$40.0 M exploration database created by predecessors.
- Monument management is now increasing its efforts to aggressively expand mineral exploration program.



# Construction Progress ...

## Monument Mining Under Construction

- Government construction permit received.
- Budget & timetable receives board approval.
- Pre-development undertaken to date:
  - Detailed engineering design underway.
  - Civil works well advanced.
  - Electrical substation under construction.
  - Administration and accommodation buildings completed.





# Team Buildup

- General Manager and Mine Manager.
- Safety Officer.
- Mine Planning Engineer.
- Purchasing Officer.
- Government Liaison Officer.
- Community Relations Officer.
- Cost Accountant.
- Survey Officer.
- Contractors Appointed.
  - Engineering Design
  - Civil Works
  - Ball Mill Installers
  - Crusher Installers

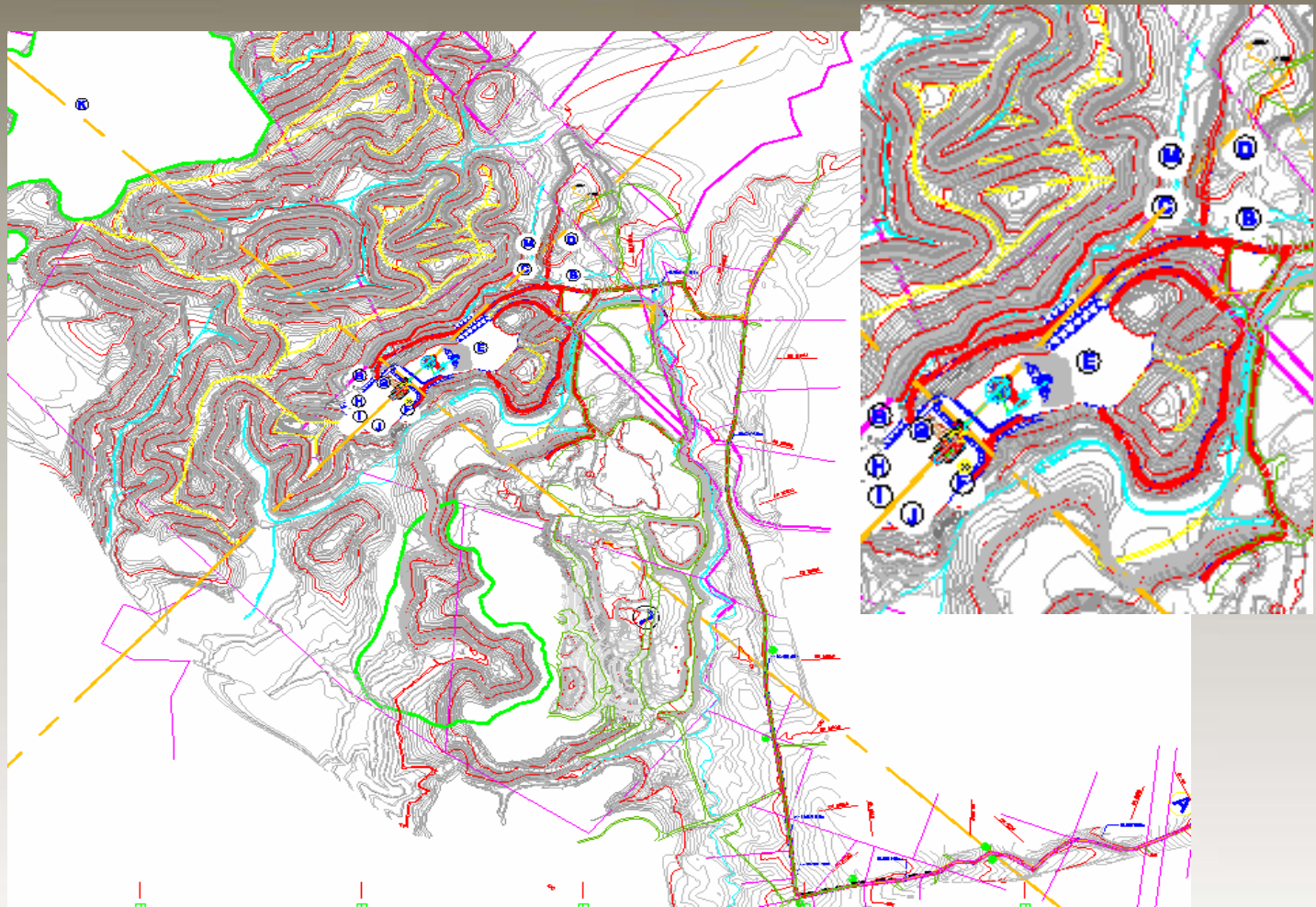


# Site Map

TSX-V:MMY  
FSE:D7Q1

## Legend

A=Start of Project  
B=Guard House  
C=Canteen  
D=Main Office  
E=Rom Pad  
F=Plant  
G=TNB Sub-Station  
H=Site Office  
I=Workshop/Store  
J=Laboratory  
K=Tailing Dam  
L=Mining Area  
M=Quarters





# Update on Site Activities

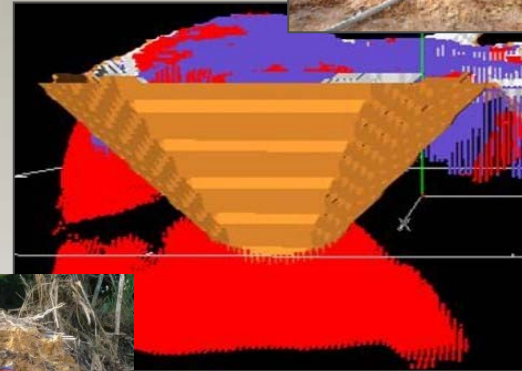
- Construction of electrical substation.
- Plant site preparation.
- Realignment of haul road.
- Office and accommodation building complete.
- Telephone and Internet co-ax cable main progressing.
- Mill refurbishment underway.



# Mine Planning

TSX-V:MMY  
FSE:D7Q1

- Key people appointed.
  - Mining planning engineer
  - Quantity surveyor
- Snowden contracted for mine design and pit optimization.
- Long term mine planning program.
- In-house technical training.
- Drill blast contractors.



# Exploration Programs

## ■ Buffalo Reef

- Diamond drill rig acquired
- Snowden design diamond drill program underway
- R.C. program completed awaiting final assays
- New resource statement to be prepared upon completion of the above-2009.

## ■ Selinsing

- Diamond Drill program planned to test extensions at depth
- Conversion of inferred to measured and indicated and new resource statement planned-2009.

## ■ Regional

### Buffalo North

- RC drill program being planned for Q3 and Q4 2009.

## ■ Land Package

- Due Diligence still underway.





# General Review

## Budget Summary

Project Construction	\$15,500,000
Exploration Program	\$2,500,000
General & Administrative	\$2,000,000

---

<b>Total</b>	<b>\$19,500,000</b>
--------------	---------------------

## Cash Resources

---

On Deposit	\$14,000,000
------------	--------------

---

Debenture Note	\$9,000,000
----------------	-------------

---

<b>Total</b>	<b>\$23,000,000</b>
--------------	---------------------

---

<b>Cash Cushion</b>	<b>\$4,500,000</b>
---------------------	--------------------

# Share Price and Market Conditions

Chart shows the past 3 months (July 28 to October 28, 2008) share price for Monument (white line), performance of the TSX Composite Index (blue line) and S&P TSX Venture Index (red line).



# Summary

- Near production low cost gold mine - 12 months away.
- Exploration upside with 4.2 km strike length, open in all directions.
- Experienced management team to build a new mine.
- Key equipment already secured including new mill.
- Excellent infrastructure with water, power and communications on site or nearby.
- Malaysian gold producer Avocet Mining PLC as major supportive shareholder (14.9%).
- Established relationship with community.
- Politically stable country with 5 year tax break.
- Open and fair communication to shareholders.
- Committed to community and employee team members.





# Investor Relations Contacts

## Canada

---

**Richard Cushing**  
Investor Relations

Monument Mining Limited  
Suite 710 - 666 Burrard Street  
Vancouver, BC, Canada V6C 3P6

Tel.: +1-604-638-1661  
Fax: +1-604-638-1663  
[rcushing@monumentmining.com](mailto:rcushing@monumentmining.com)  
[www.monumentmining.com](http://www.monumentmining.com)

## Europe

---

**Wolfgang Seybold**  
President & CEO

AXINO AG  
Koenigstrasse 26  
70173 Stuttgart, Germany

Tel.: +49-711-25 35 92 40  
Fax: +49-711-25 35 92 55  
[wolfgang.seybold@axino.de](mailto:wolfgang.seybold@axino.de)  
[www.axino.de](http://www.axino.de)

# Cautionary Statement

This presentation includes certain estimates, projections and “forward looking statements” within the meaning of Section 21E of the Securities Exchange Act of 1934, as amended that have been provided by the Company with respect to its anticipated future performance. Such forward looking statements reflect various assumptions by the Company concerning anticipated results, which assumptions may or may not prove to be correct. No representations are made as to the accuracy of such statements, estimates or projections. These forward-looking statements are made pursuant to the “safe harbor” provisions of the Private Securities Litigation Reform Act of 1995. While these statements are made to convey the Company's progress, business opportunities and growth prospects, such forward-looking statements represent management's opinion. Whereas management believes such representations to be true and accurate based on information and data available to the Company at this time, actual results may differ materially from those described. The Company's operations and business prospects are always subject to risks and uncertainties.