



**TIGER**  
RESOURCES LIMITED



## COMPANY PROFILE

Tiger Resources Limited (Tiger) is a mineral exploration company listed on the Australian Stock Exchange (ASX) and has its registered office in Perth, Western Australia.

The company's strategic focus is on the discovery or acquisition of significant high grade near surface Copper/Cobalt/Gold/Platinum/Palladium/Uranium deposits hosted in the highly mineralized "Roan Sequence" of the world renowned Africa Copper Belt in the DRC.

In association with Congolese partners, Groupe Orgaman (Orgaman) and SOMIKA, Tiger has signed agreements to acquire a majority interest in a package of properties that includes the permits covering the Kabolela Copper-Cobalt deposit and the Kipese Gold-Palladium-Cobalt deposit (a

resource of 3.7 million tonnes grading 3.8% Cu and 0.7% Co has been indicated at Kabolela) and a group of seven permits covering some 1640 sq km of ground in the Katanga Province prospective for polymetallic mineralisation.

Tiger also has a majority interest in a gold exploration concession, Rosa de Maio, located in the state of Amazonas, Brasil.

The company is run by a strong management team with extensive experience of working in Africa

Shares in the company are traded on the ASX under the code TGS and are also traded on the Frankfurt Stock Exchange.





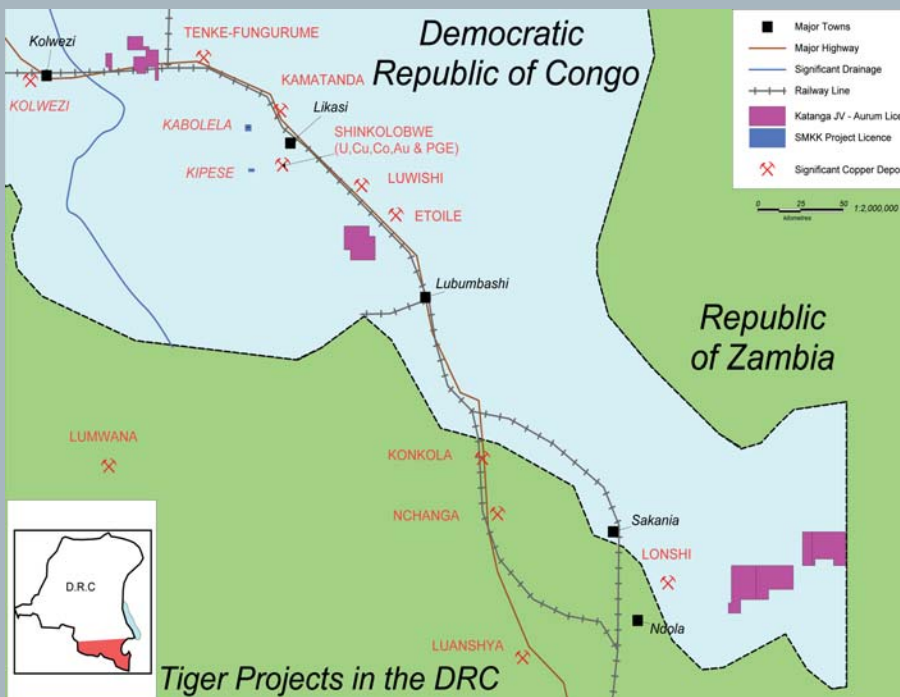
# TIGER EXPLORATION PROJECTS

## DEMOCRATIC REPUBLIC OF CONGO

### GEOLOGICAL SETTING

All of Tigers projects in the DRC are located within the Central African Copper Belt which represents one of the world's largest known Cu-Co metallogenic provinces and contains some of the world's richest Copper/Cobalt mines. Nearly all the economically important deposits occur as stratiform orebodies within the Mine Series of the Roan Sequence. Roan sediments were brecciated and brought to surface along several sub-parallel arcuate thrust structures during the Lufilian Orogenic period.

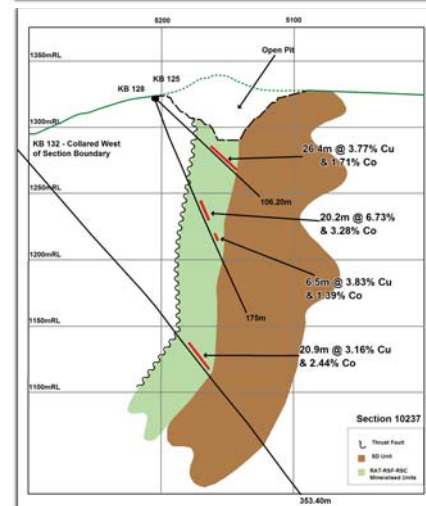
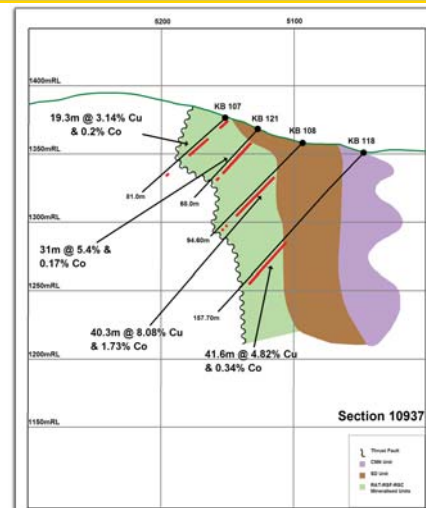
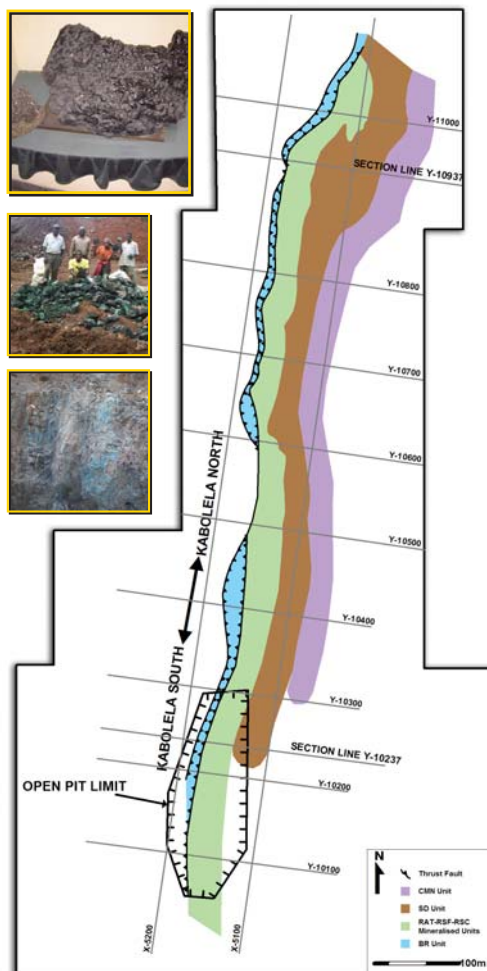
Uranium-Nickel-Gold-and Platinum Group metals are commonly associated with the Cu-Co mineralisation. The Shinkolobwe deposit hosted in Mines Group sediments was the world's largest uranium producer.



### SMKK PROJECT

#### KABOLELA DEPOSIT

- Located 45 km northwest of Likasi and covers an area of approximately 670ha
- Close to 9000m of Diamond drilling over the Kabolela North and Kabolela South adjoining ore bodies.
- Total inferred resource of 3.7 million tonnes grading 3.8% Copper and 0.7% Cobalt including indicated oxide resource of 664 400 tons at 2.47% Cu and 0.64% Co amenable to open mining.
- Kabolela South was mined up to 1945 and produced 440,000 tonnes of ore grading 4.84% Copper and 2.38% Cobalt.
- Sulphide resources open to depth.
- Favourable recoveries of up to 96% Copper and 50% Cobalt
- Good potential for early cash flow from the processing of an estimated 440,000 tonnes low grade surface ore dumps and tailings.

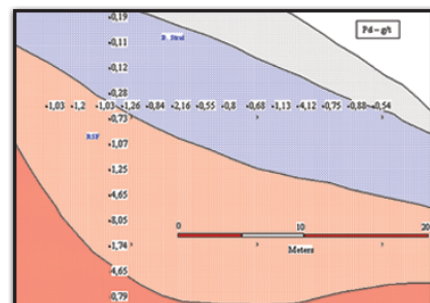
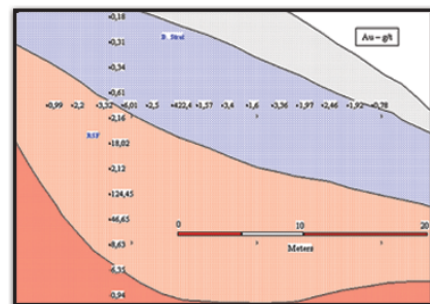
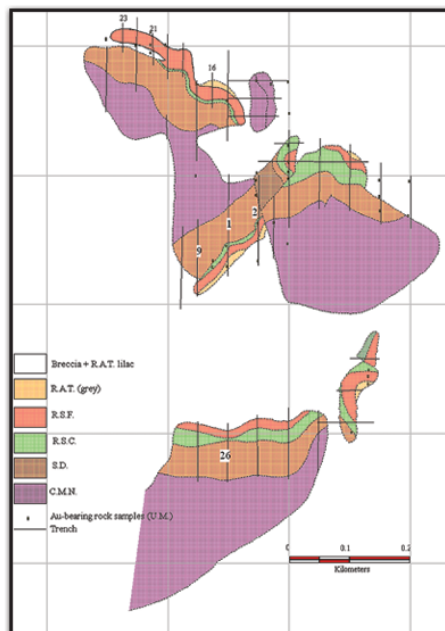






## KIPESE DEPOSIT

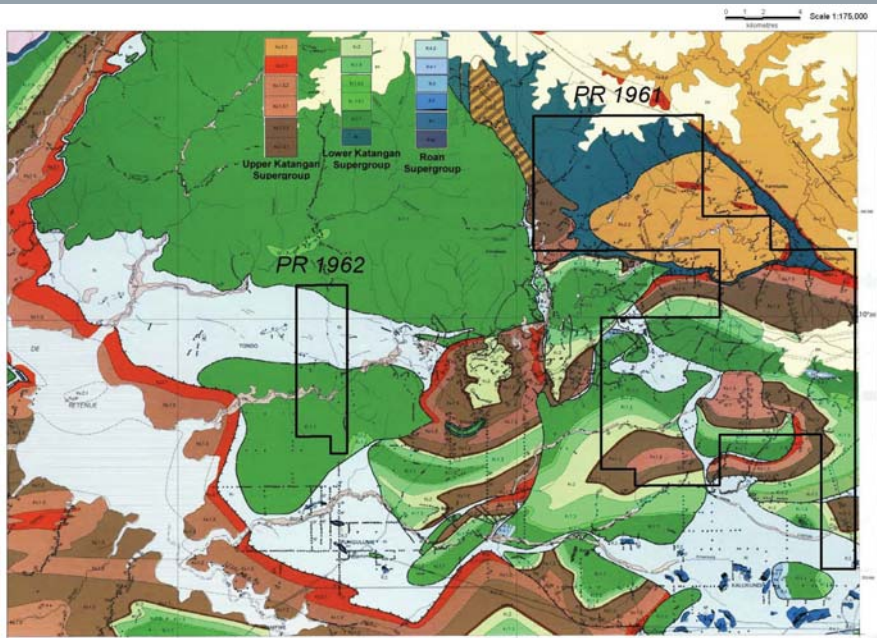
- Located 8km west of the Shinkolobwe U-Cu-Co-Au mine
- Geological mapping and almost 4,000 metres of trenching has identified two major fragments mineralized Mines Group sediments with polymetallic mineralization over a strike of >1km
- Gold-Palladium-Cobalt deposit with anomalous Uranium
- Trench results include intersections of 8.63 g/t Au, 1.97 g/t Pd & 0.75 % Co over 22 m, and 26.2 g/t Au, 1.87g/t Pd and 3.71% Co over 14m
- Base of oxidation estimated to be 40 metres.
- Immediate drill targets and potential to rapidly define a mineral resource



## AURUM PROJECTS

**PERMITS: PR 1961, 1962, 2214, 2133, 2138, 2139 AND 2508**

- Entered into joint venture agreements with local company Aurum to explore 7 Permits with total area of 1640 square kilometers
- Tiger has the right to earn an interest of up to 71.25% in each of the Permits.
- Permits all located in the Katanga Province and situated in proximity of Kolwezi (west), Lukasi (central) and Sakania (southeast)
- All permits prospective for polymetallic deposits of Copper, Cobalt, Gold, PGE's and Uranium.
- Program of pitting undertaken by Aurum on PR 1961 gave values of up to 12.25% Cobalt.
- Regional mapping shows Permits 1961 and 1962 cover large areas of Roan sediments.
- Reconnaissance mapping and sampling programme on PR 2214 returned significant grades of Copper and Cobalt up to 0.4% from extensive artisanal workings on the property.
- Active exploration programme of permits in progress. A helicopter magnetic and radiometric survey was recently flown on PR 1961, 1962 and 2214 (January 2006).
- Geological team in place to carry out field evaluation.







## BRASIL

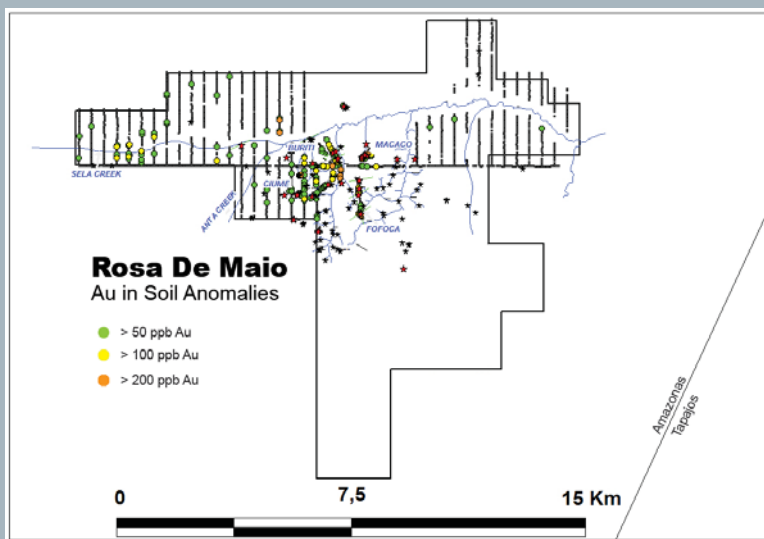
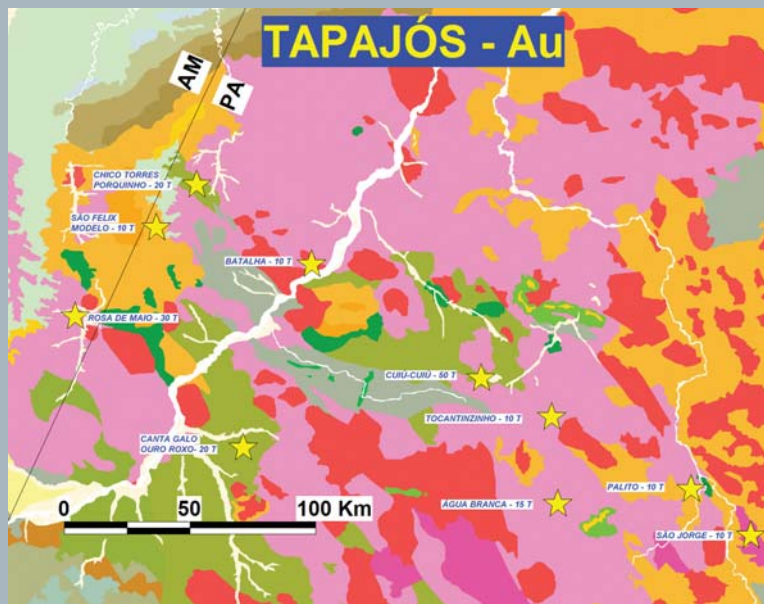
### GEOLOGICAL SETTING

The Tapajos Gold Province in northern Brazil has an aerial extent of more than 1,4m square km. More than 90% of the unofficial 20Moz (10Moz official) was produced from alluvial mining making the area highly prospective for new primary mineralized discoveries.

Primary gold occurs within high grade quartz veins or is hosted by intensely fractured granites crosscut by high grade quartz-sulphide veins. An intersection of the latter drilled at Tocantinzinho reported 226m @ 1.5g/t Au (including 83.3m @ 2.3g/t Au).

### ROSA DE MAIO PROJECT

- Located near the town of Maués, in the state of Amazonas and has a surface area of 96sq km.
- 20 tonnes Au recovered from 10 km of alluvial workings.
- Style of mineralization typically high grade quartz veins (108 & 60 g/t Au) and potential sulphide rich fractured granites reporting up to 4 g/t Au.
- Very little work and no drilling to define primary mineralization.
- Regional soil sampling and geological mapping and sampling programme commenced in late 2005.
- Airborne magnetic and radiometric survey flown in January 2006.
- Early results show a continuous > 100ppb anomaly in the centre of the concession (Bariti) likely derived from altered granites which reported grades up to 4 g/t Au
- Coincident soil anomalies and structures identified in the recently completed aeromagnetic survey (January 2006) will be followed up with drilling in mid 2006.



## EXPLORATION PROGRAMME 2006

An aggressive work programme is planned for all properties in 2006. The objectives are to increase the existing resource base and to identify drilling targets on the less well developed projects.

Activities will include:

- Opening of an exploration office in Lubumbashi, DRC.
- Infill drilling at Kabolela for resource evaluation in preparation for a bankable feasibility study
- Scoping study to bring tailings into early production at Kabolela.
- First pass drilling at Kipese.
- Regional exploration on all permits in the Aurum Project, including airborne magnetic and radiometric surveys.
- On going evaluation of acquisition opportunities
- Drill testing of anomalous gold targets already identified at Rosa de Maio.

## **DIRECTORS**

Reginald N GILLARD (Chairman)

David J YOUNG (Executive)

David N ZUKERMAN (Executive)

Mark R GASSON (Executive)

Klaus P ECKHOF (Non-Executive)

Michael E SCIVOLO (Non-Executive)

## **Company Secretary**

Bruce R McCULLAGH

## **Registered Office**

West Perth, Australia

PO Box 1618

West Perth,

WA 6872

Email: [tiger@tigerez.com](mailto:tiger@tigerez.com)

Web: [www.tigerez.com](http://www.tigerez.com)



**TIGER**  
**RESOURCES LIMITED**