



TIGER RESOURCES LIMITED

ANNUAL GENERAL MEETING

30TH NOVEMBER 2006

PERTH

Tradeable Securities as of 30 November, 2006

– Issued Shares	125,634,369.
– Listed Options	64,406,960

Market Capitalisation (undiluted)	AUD\$58 million
Current Cash Position	AUD\$ 8 million

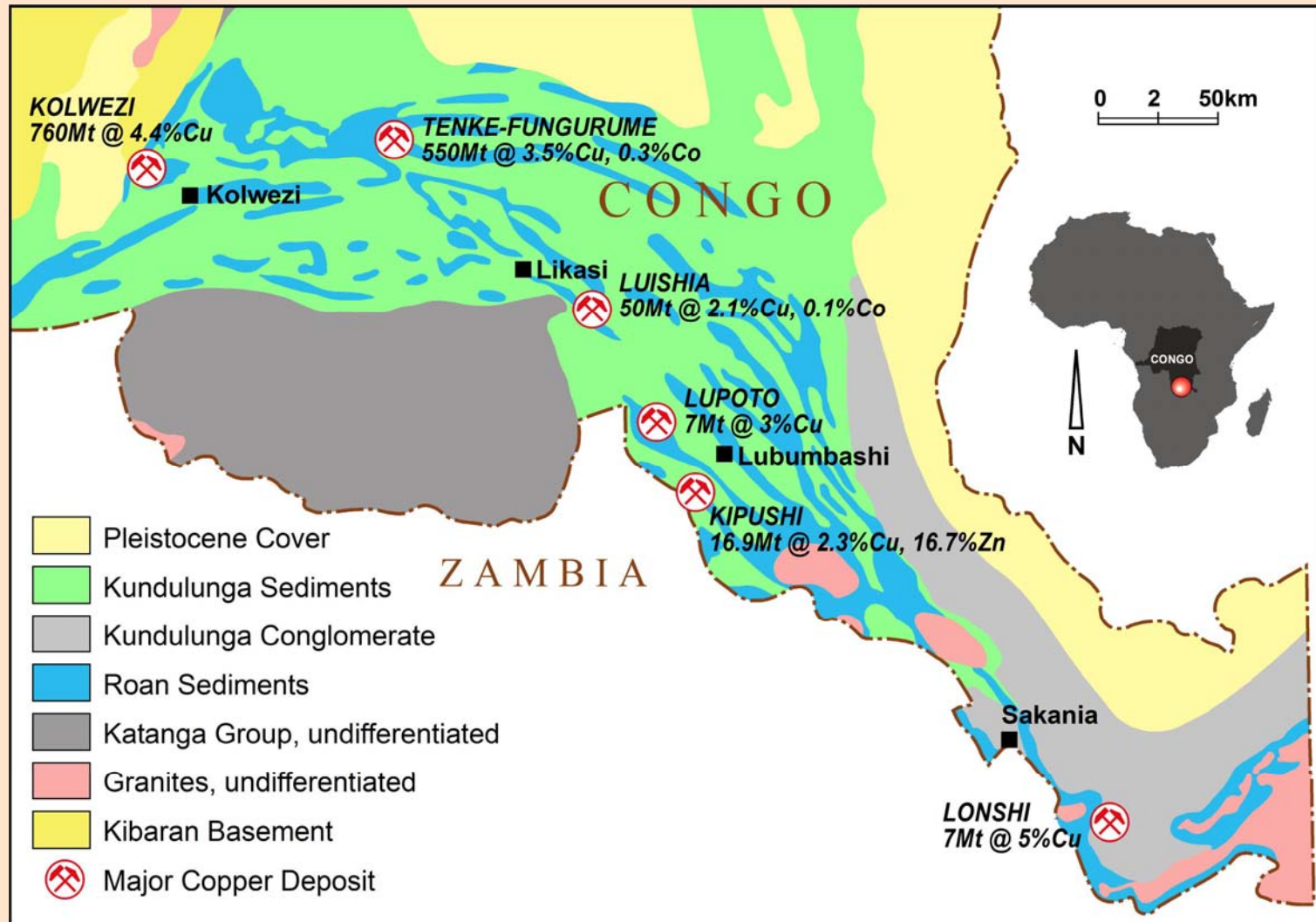
Stock Exchange Listing	ASX: TGS
	FSE: RH8

- Redirected focus of activities to DRC.
- Established Portfolio of quality mineral projects located in World Class copper province with multiple exploration targets.
- Entered into 2nd JV with Aurum sprl to explore 6 permits.
- Entered into JV with Congo Minerals to acquire 60% interest in Kipoi Project.
- Established Operations Base in Lubumbashi.
- Actively explored all project areas and commenced drilling programs at Kipoi.
- Raised AUD 11 Million to fund exploration programs.

- African Copperbelt one of greatest metallogenic provinces on the earth.
- Katanga region hosts some of the richest and largest copper/cobalt deposits in the world. Tenke Fungurume 550Mt @ 3.5%.
- Katanga region estimated to contain 10% of worlds copper resources and 50% of cobalt. Over 89 known deposits size 90 – 580Mt @ 3.6% Cu.
- Area is considerably unexplored with significant potential for discovery of major new deposit.

KATANGA COPPERBELT DRC

Geology And Project Location

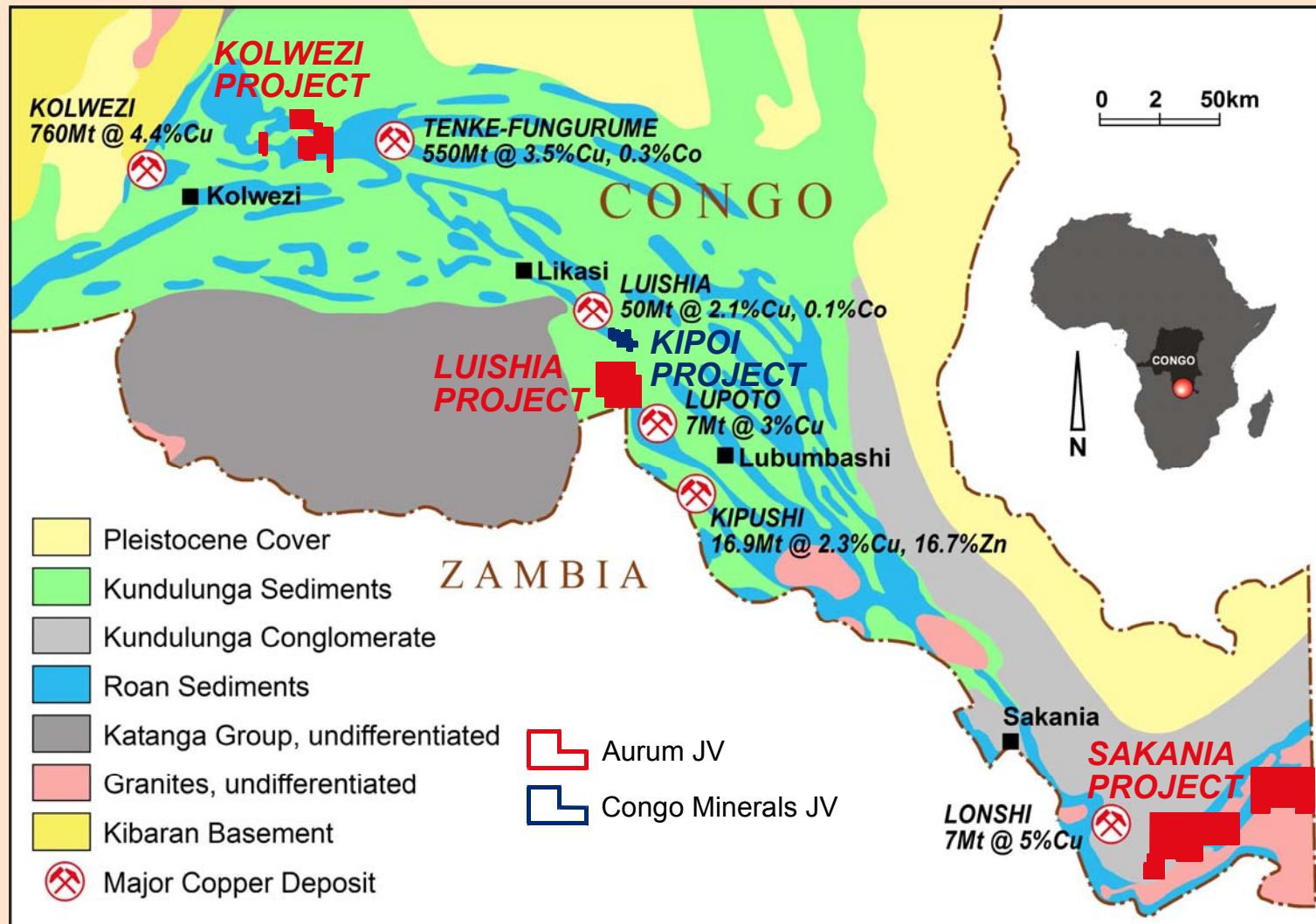


- DRC getting back on to its political feet.
- First democratic elections held since independence, 1960.
- Mr Joseph Kabila confirmed as President with 58% of vote.
- Mining seen as lynchpin to economic recovery
- Newly introduced Mining Act.
- Restructuring of Gecamines
- New mines are being developed.
- Able to raise capital to develop projects.

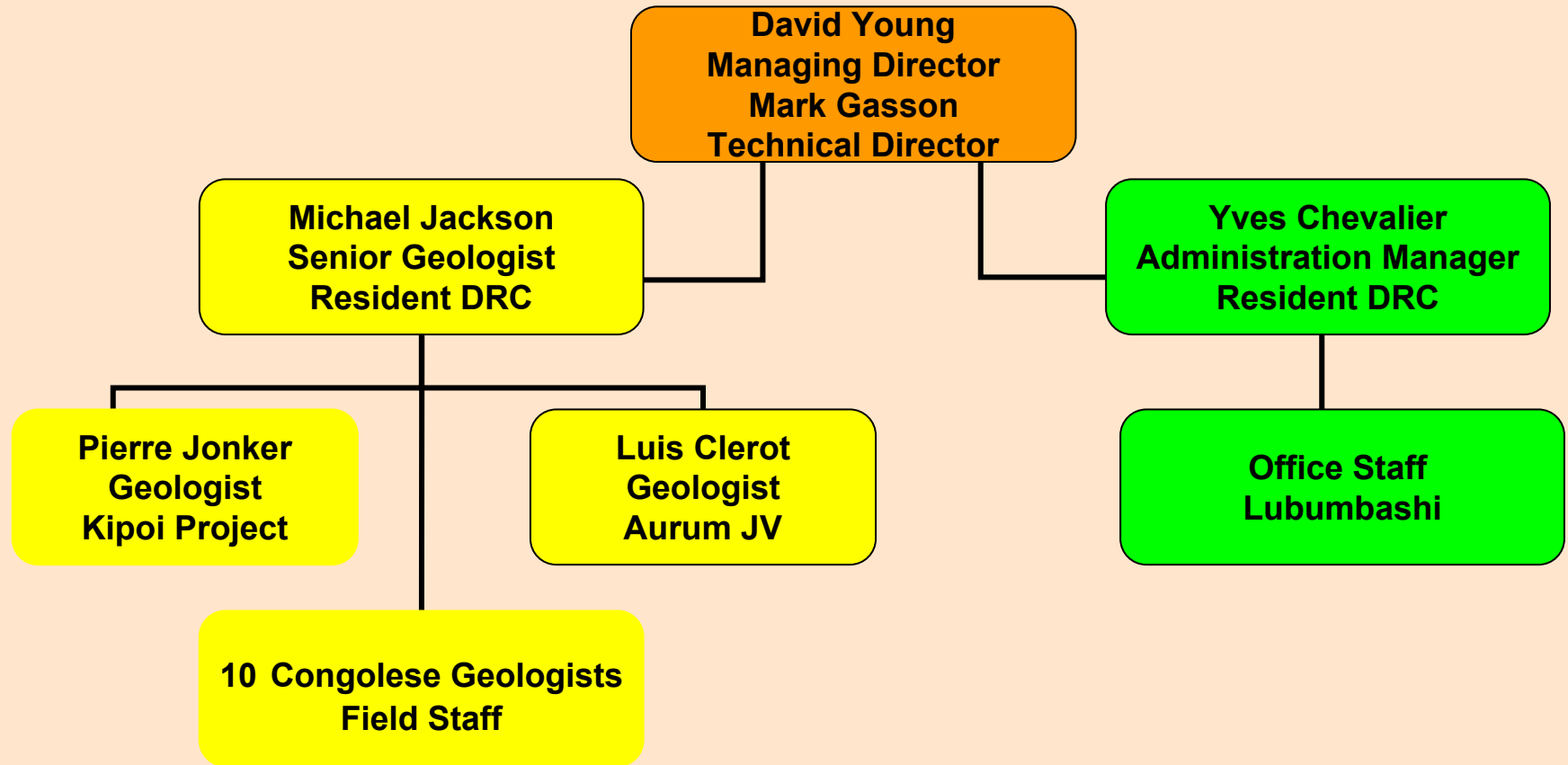
- Company actively exploring ~ 1700 sq km of ground in the Katanga Copperbelt
- Exploring for multi commodity targets
 - Copper, Cobalt, Gold, Uranium
- Projects range from early stage grassroots to drill ready targets.
- Tiger in JV with Orgaman can earn up to a 60 - 80% in the Kipoi Project
- Can earn up to a 70% interest in group of seven permits under the Aurum sprl.

Exploration Interests

Regional Geology And Project Location



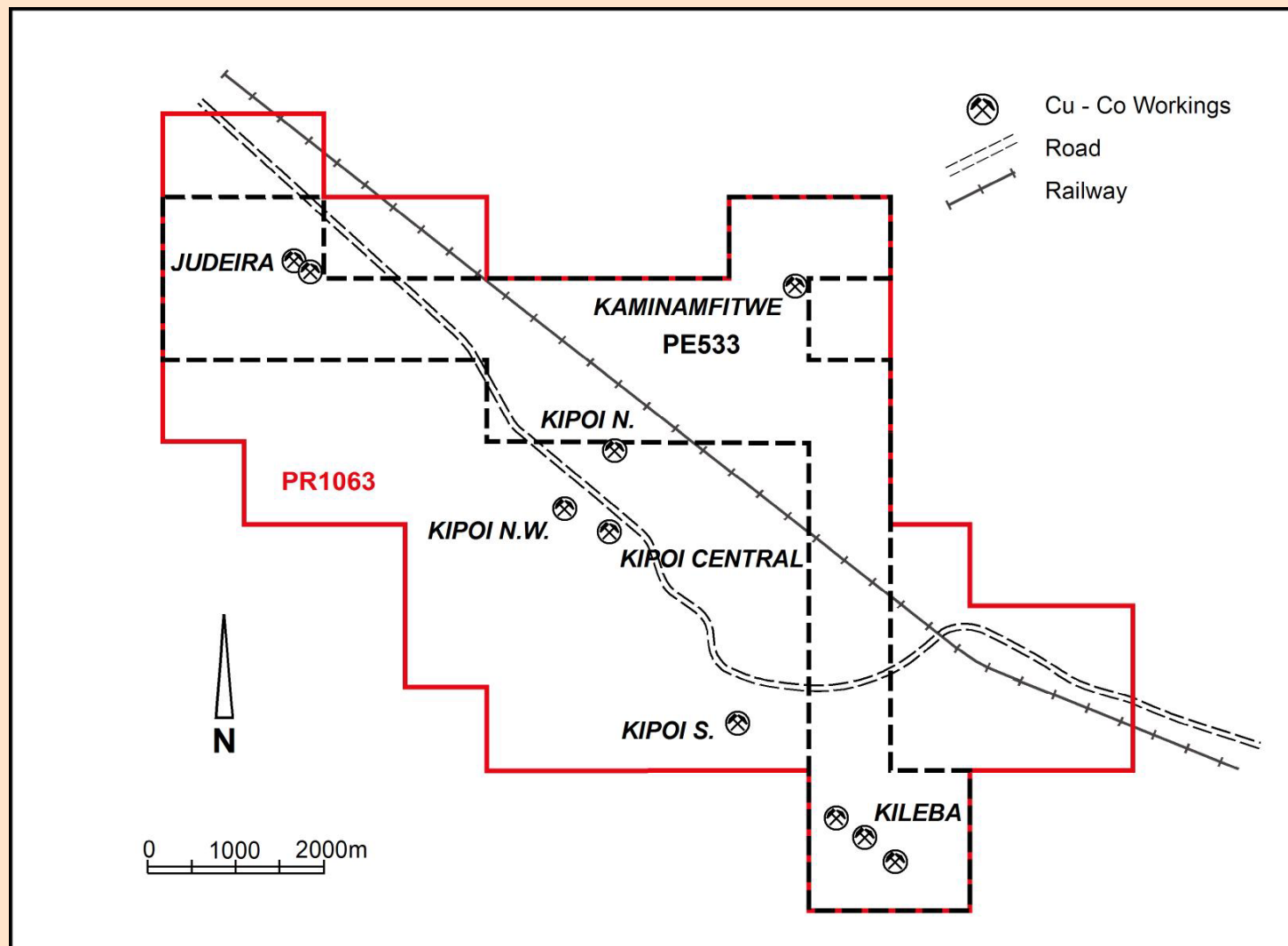
Management Team

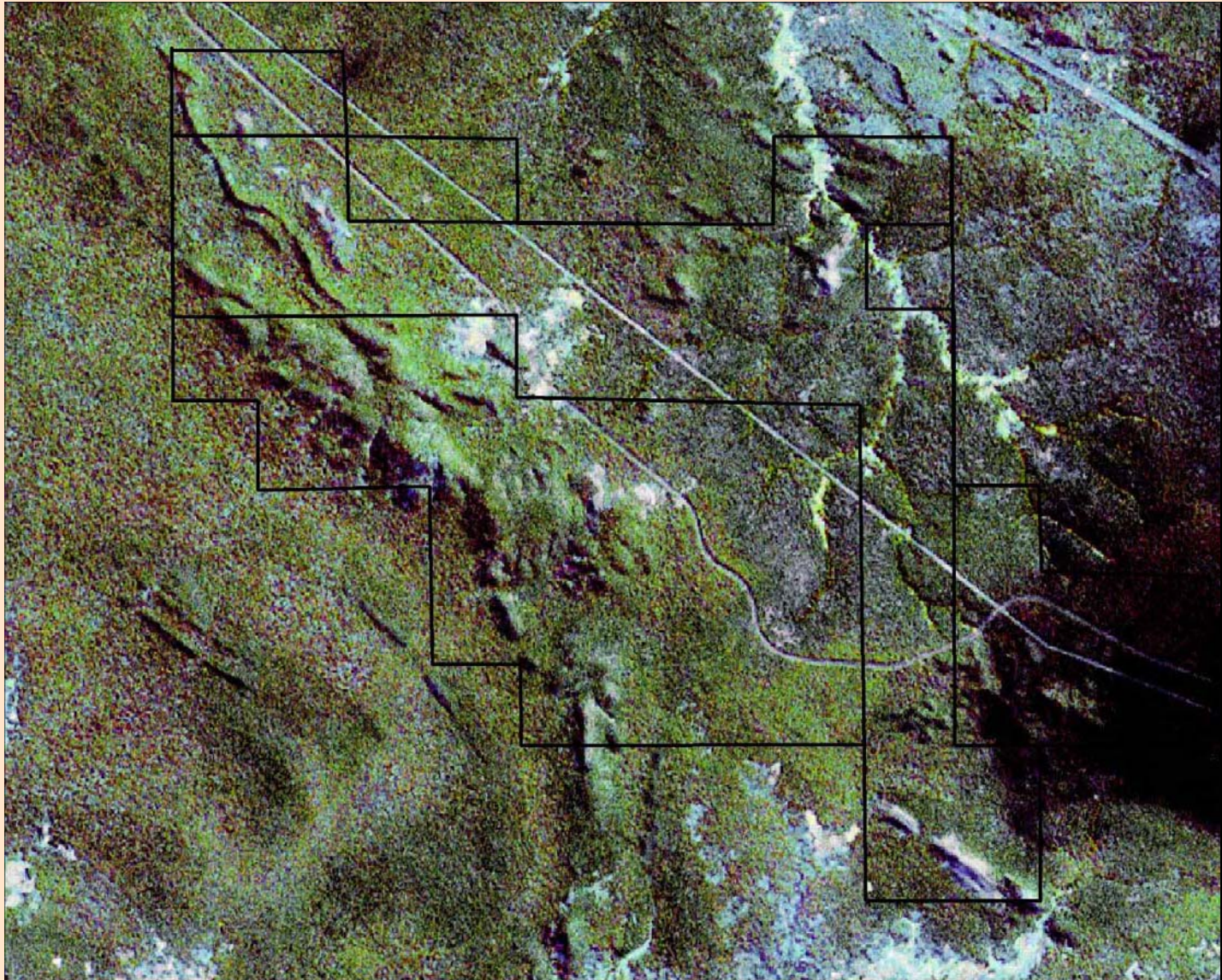


- Project has five known copper orebodies
- No prior systematic exploration
- Excellent infrastructure - rail and high voltage power lines, close to main road
- TGS started exploration ~ drilling, trenching, geophysics.
- Highly encouraging and economic significant results. Good grades and widths of Cu
- Company formalised JV agreement to acquire 60% in project with option for further 20%
- Exploration objective identify a copper resource of between 300,000 to 500,000 t in situ Cu metal by end 2007

KIPOI PROJECT

Geology, Orebodies & Exploration Targets

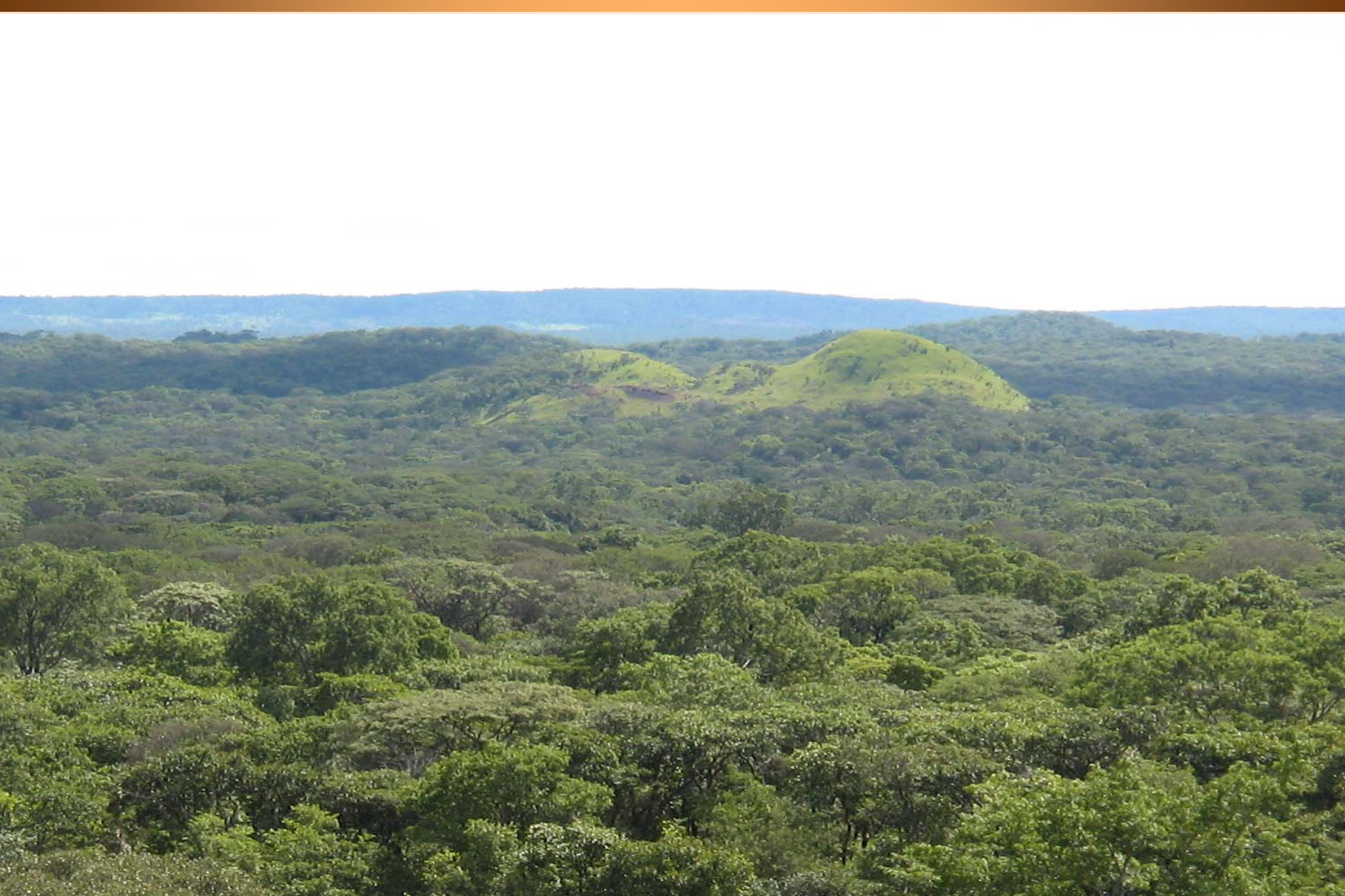




Kipoi Copper Deposits



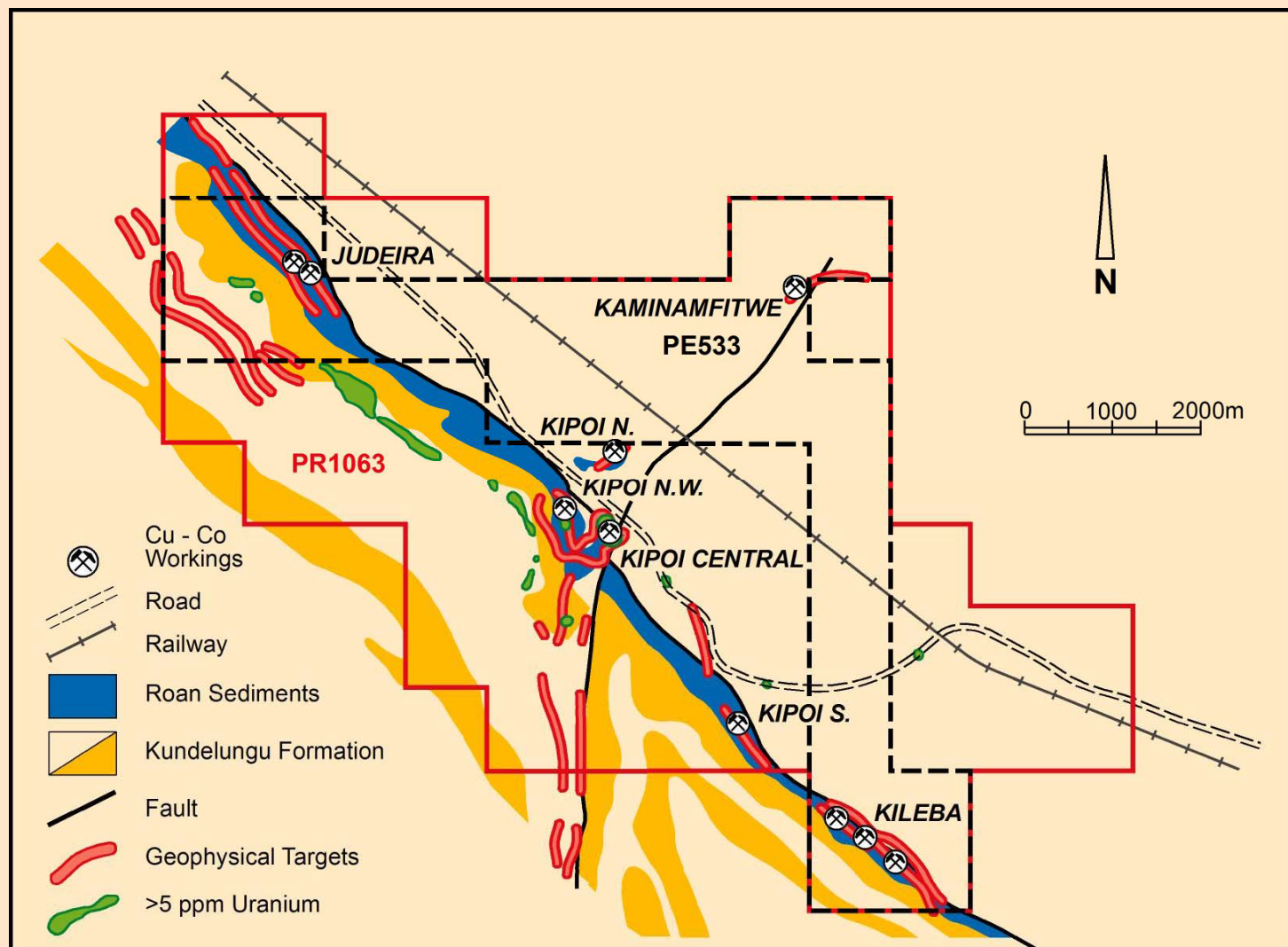
13 16:32



- A 34 hole RC programme completed for 2,500m
 - 20 holes drilled at Judeira. 14 holes at Kileba
 - Four diamond drill holes completed (877m), fifth hole in progress
 - Mapping, trenching & rock chip at Kipoi Central, North, Judeira, Kileba
-
- Delineated multiple near surface, high grade zones of Cu mineralisation at Judeira and identified mineralisation over 2km strike.
 - At Kileba trenching and drilling confirms inc:
76m @ 1.04%Cu, 40m @ 2.24%Cu, 22m @ 3.67%Cu ,
at Kileba delineated Cu mineralisation over 1.2km strike. Drill results show mineralisation continues at depth.

KIPOI PROJECT

Geology, Orebodies & Exploration Targets

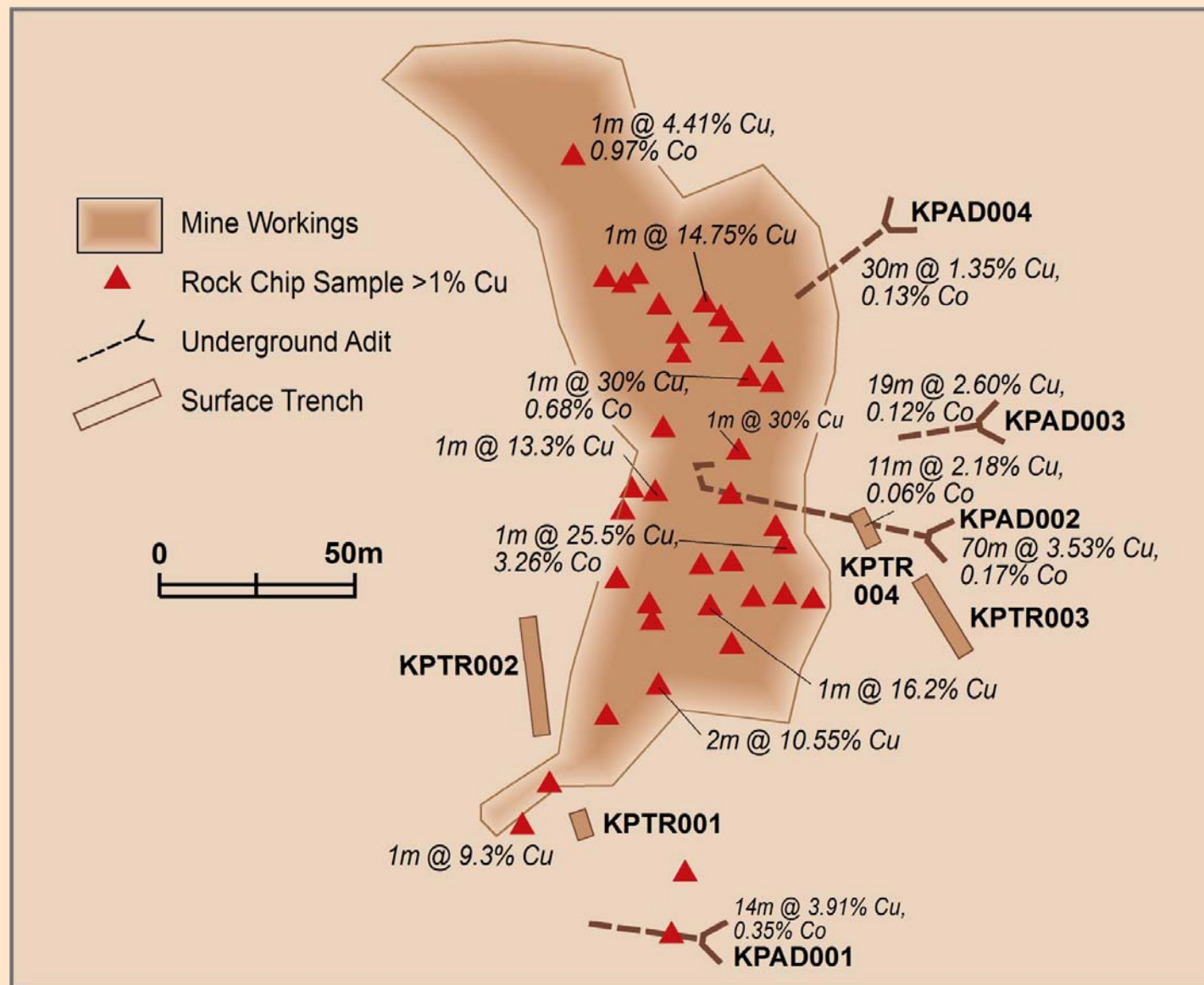


Kipoi Central Deposit



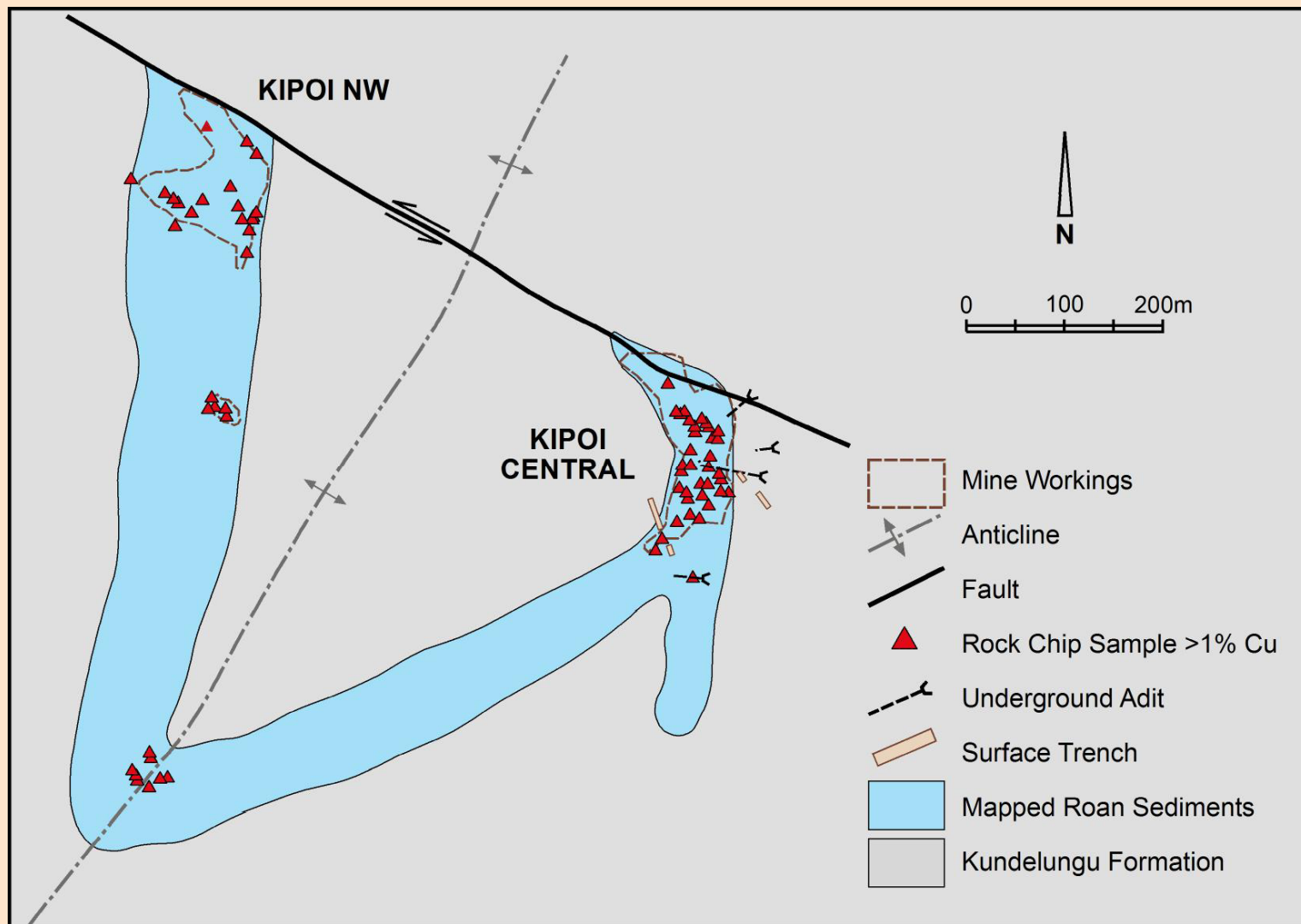
KIPOI CENTRAL OREBODY

Trench, Adit and Rock Chip Sampling



KIPOI NW & CENTRAL OREBODIES

Trench, Adit and Rock Chip Sampling



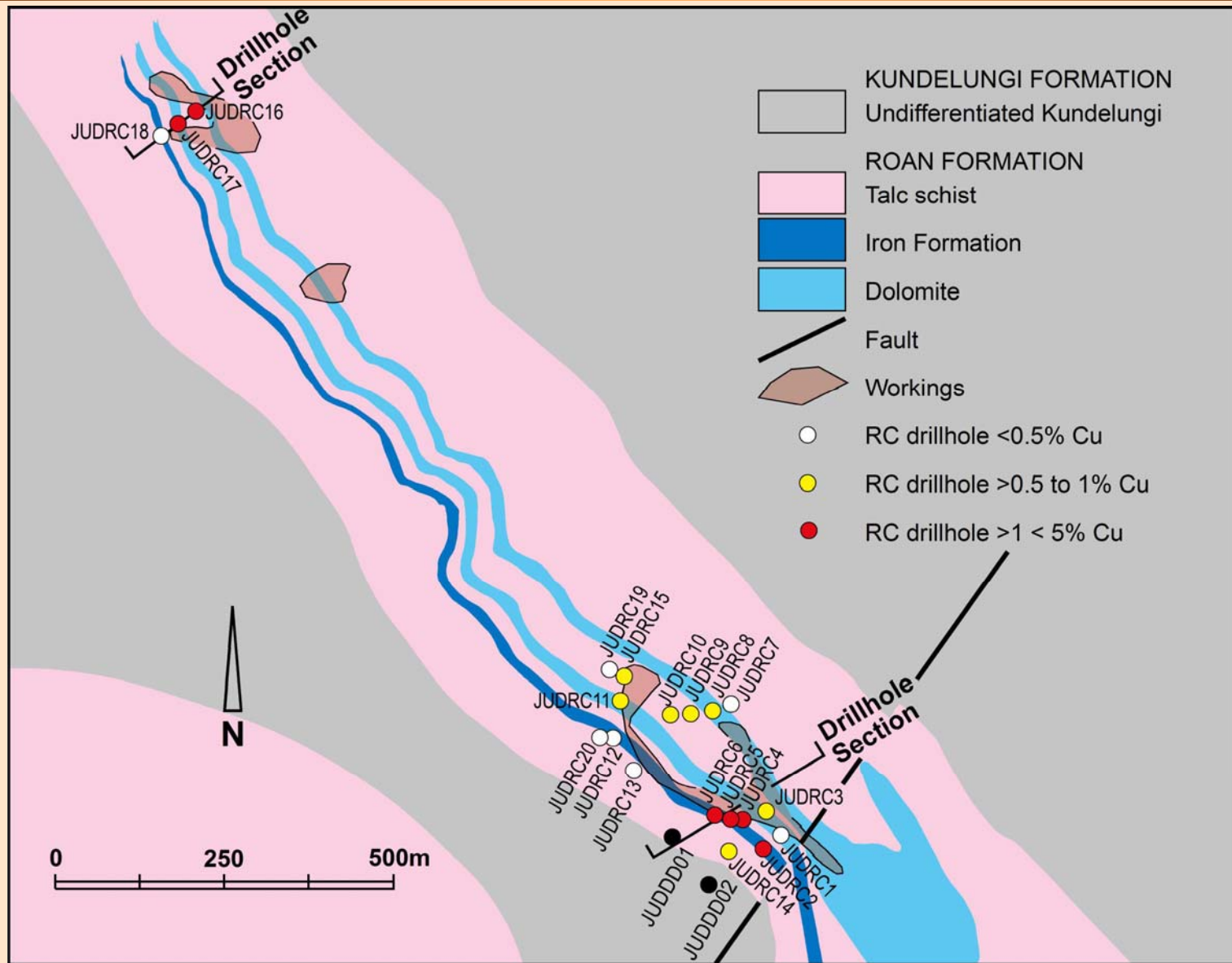




Hole ID	From	To	Width	%Cu Grade
JUDRC002	06m	20m	14m	1.22
JUDRC004	07m	27m	20m	2.15
	41m	53m	12m	1.33
JUDRC005	16m	59m	43m	4.68
JUDRC006	35m	78m	43m	3.63
JUDRC014	35m	58m	23m	1.46
JUDRC015	09m	21m	12m	0.96
JUDRC016	03m	32m	29m	1.72
JUDRC017	43m	61m	18m	2.39

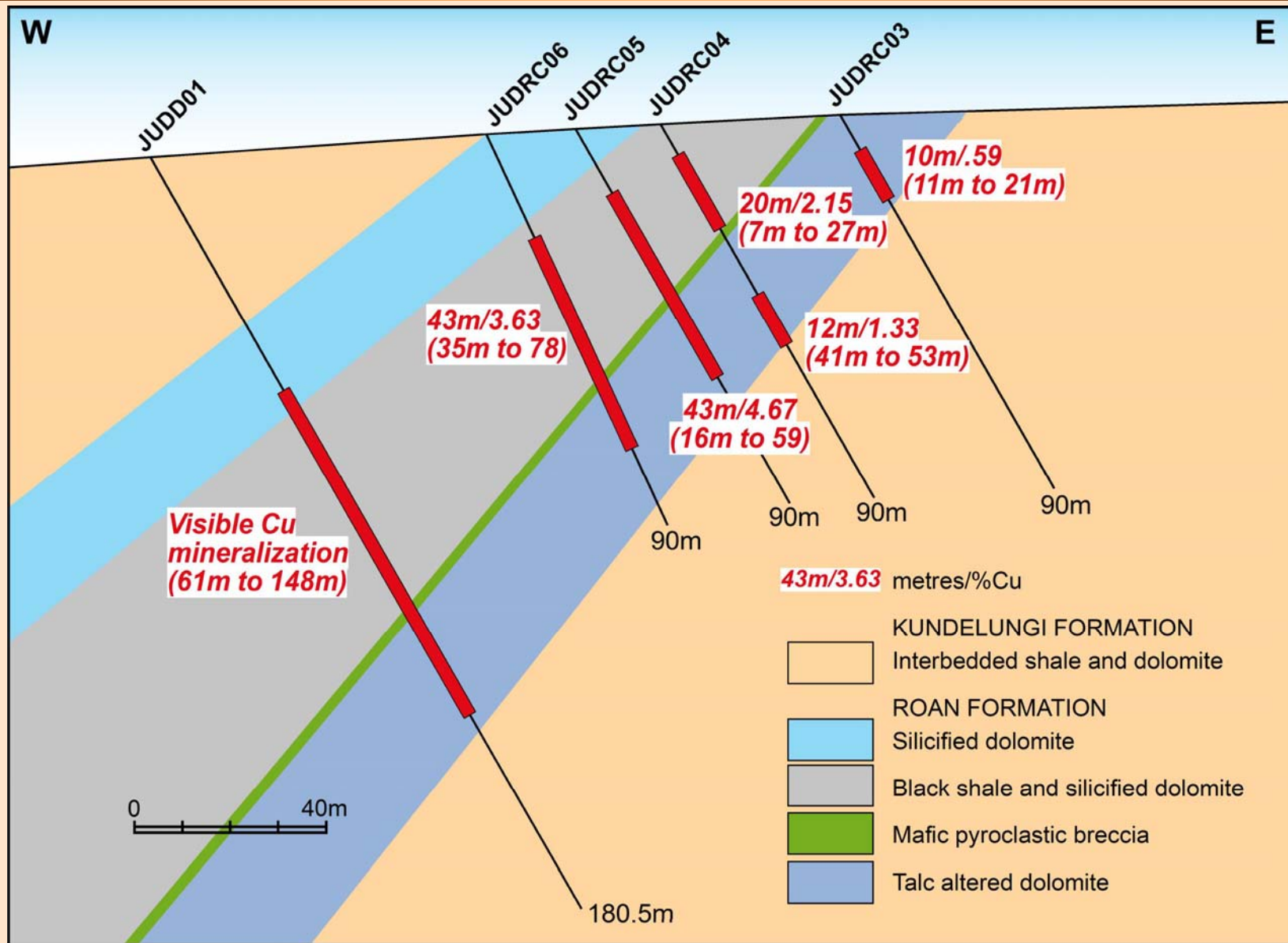
JUIDERA PROSPECT

Geology and Drillhole Locations



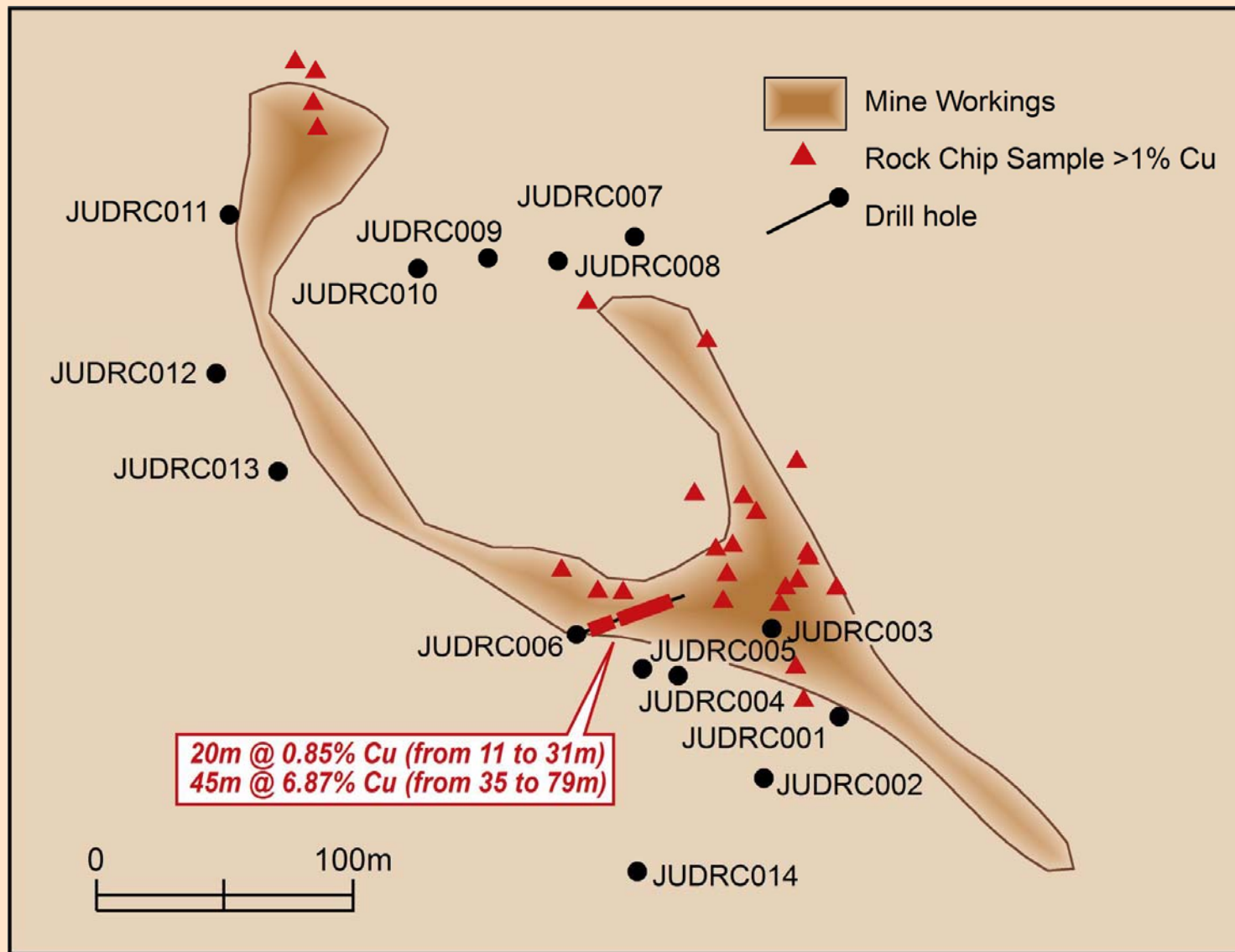
JUDEIRA PROSPECT

Drillhole Section on 8,759,215mN



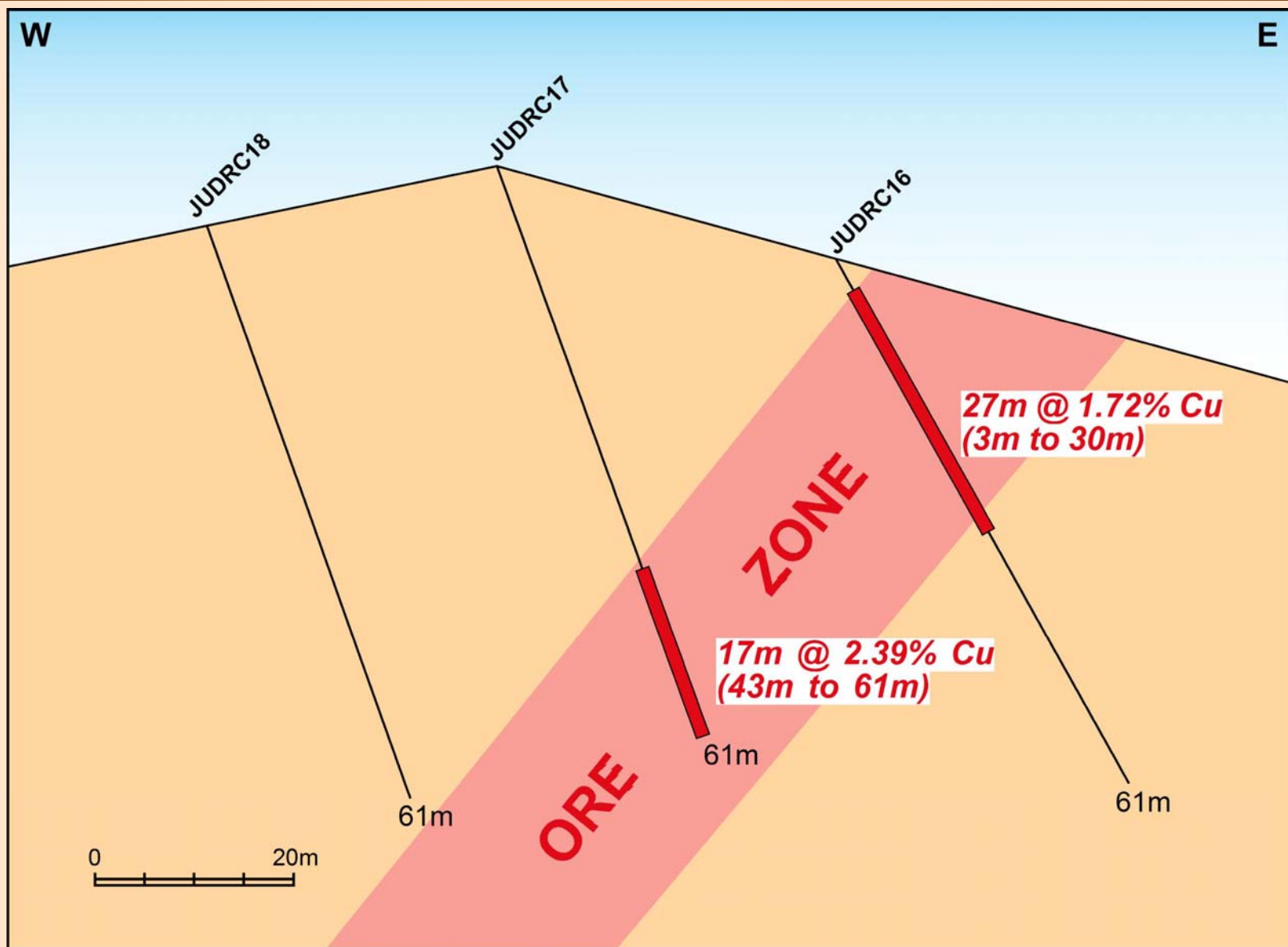
JUDIERA OREBODY

Drilling and Rock Chip Sampling



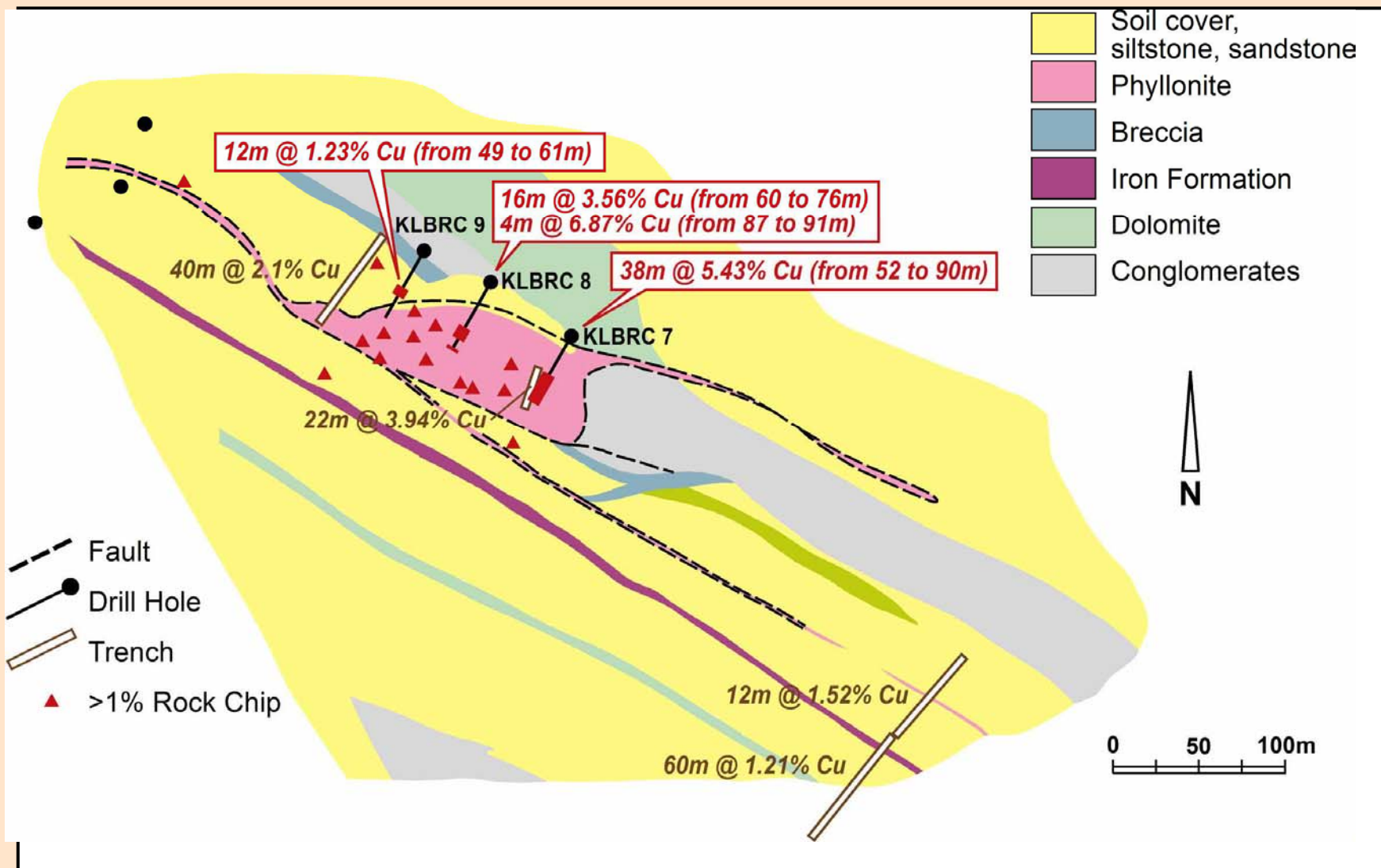
JUIDERA NW PROSPECT

Drillhole Section on 8,760,250mN



KILEBA SE OREBODY

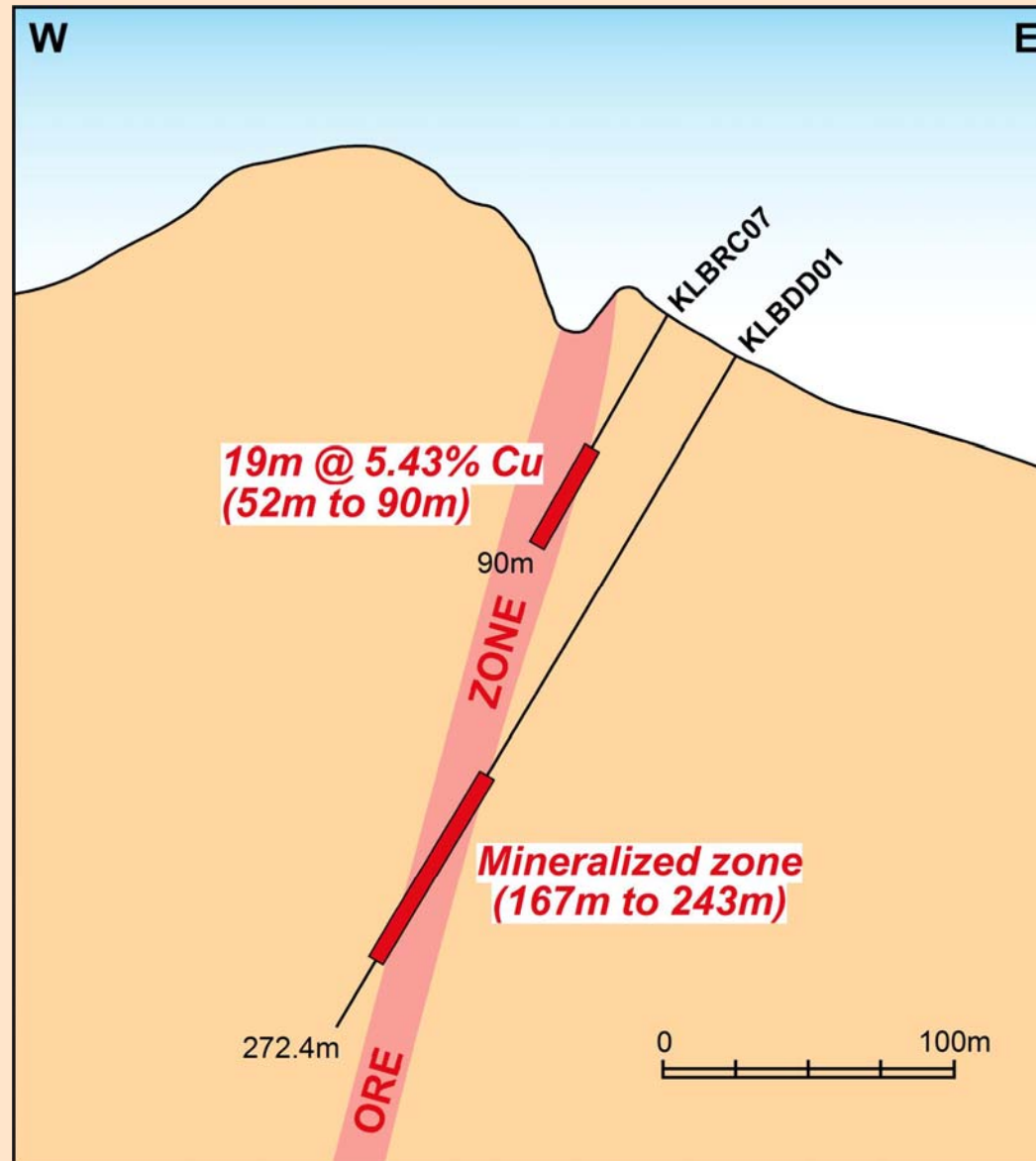
Drilling, Trench and Rock Chip Sampling



Hole ID	From	To	Width	%Cu Grade
KLBRC003	33m	45m	12m	1.66
KLBRC007	52m	90m	38m	5.43
KLBRC008	60m	76m	16m	3.56
	87m	91m	04m	6.87
KLBRC009	49m	61m	12m	1.23
KLBRC010	30m	60m	30m	1.08

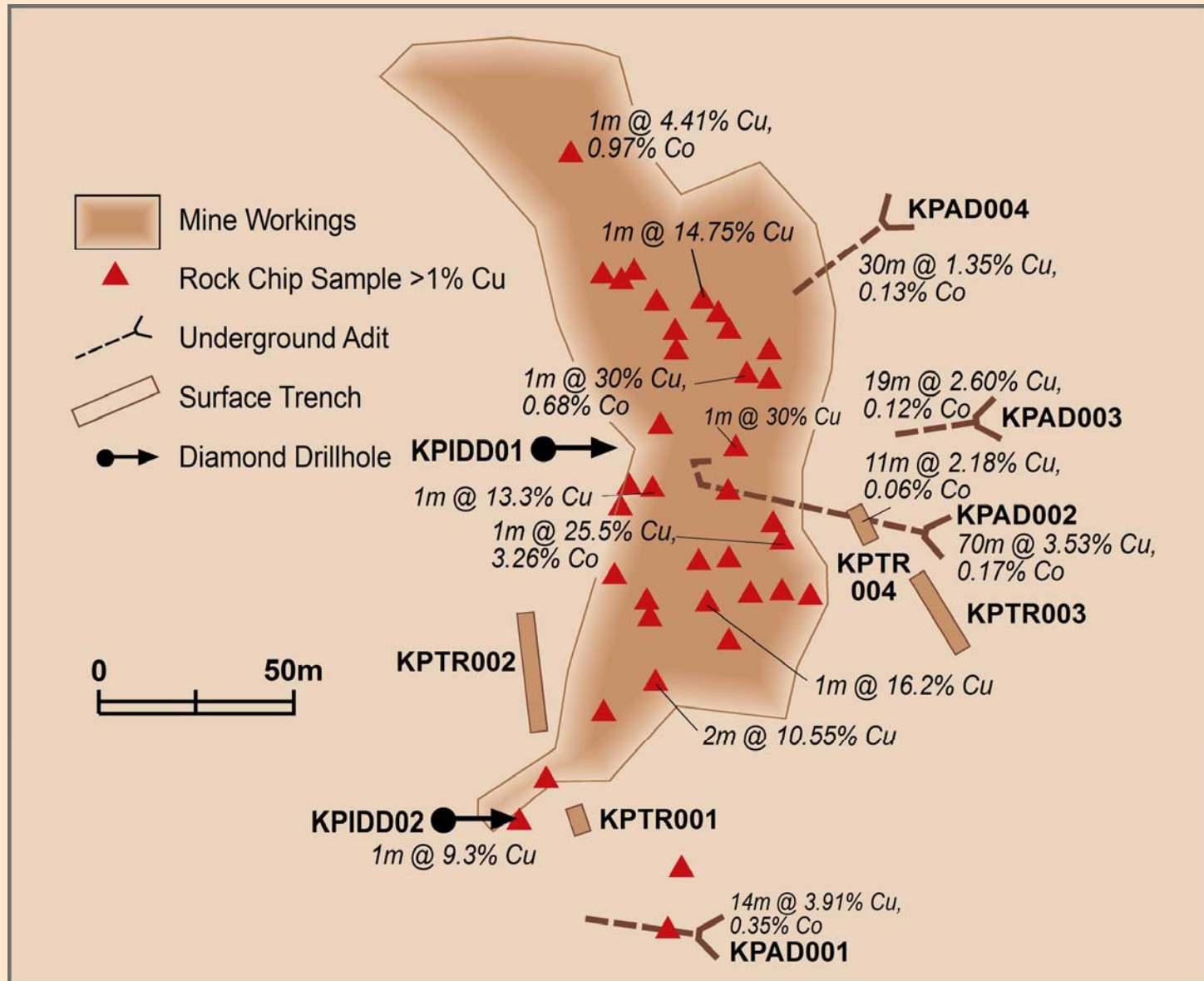
KILEBA PROSPECT

Drillhole Section on 8,752,600mN



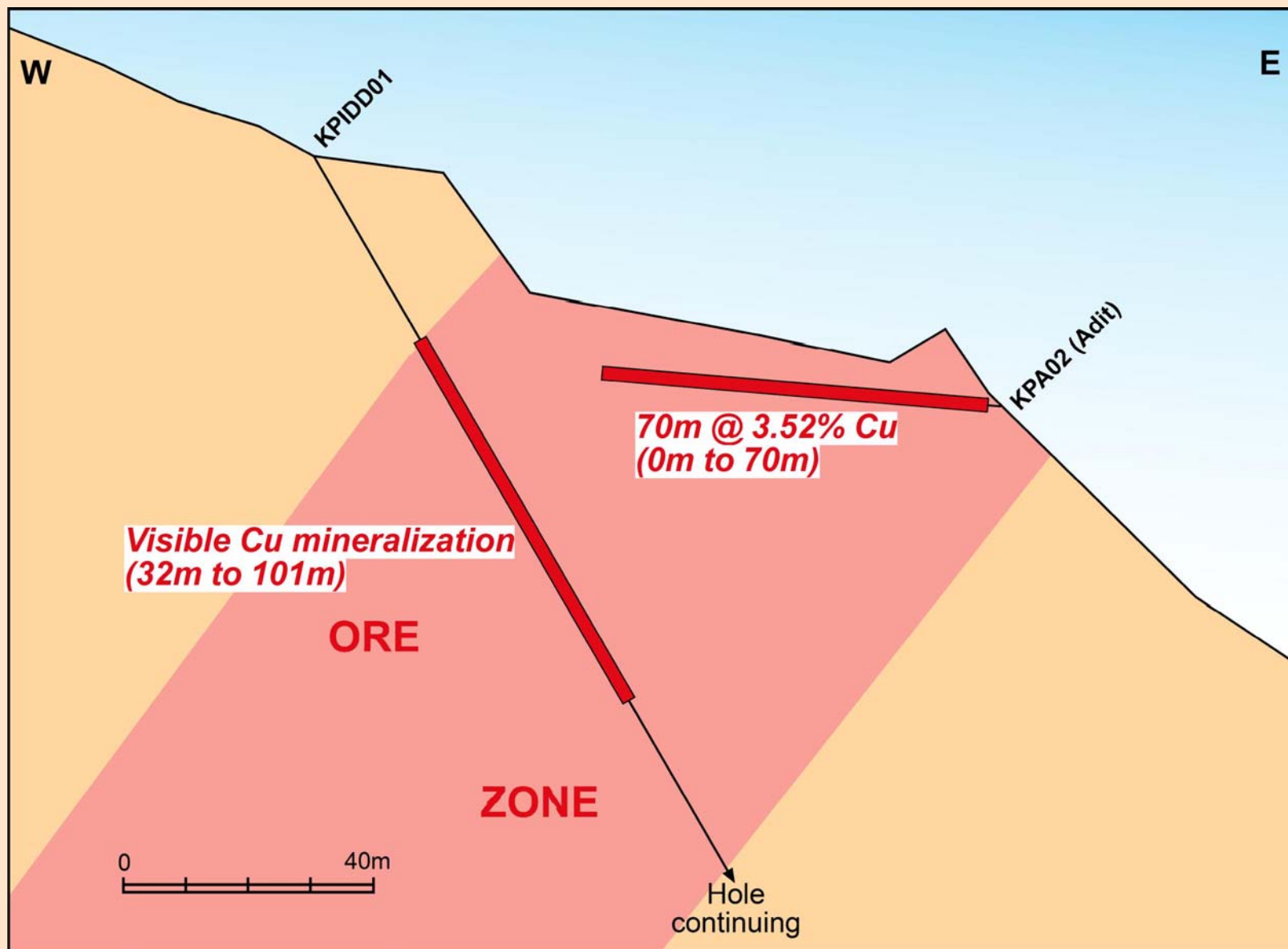
Hole ID	From	To	Width	Mineralisation
JU DD001	61m	148m	48m	Visible malachite along fractures, small veins
JU DD002	79.8m	83.8m	04m	Visible malachite
KLBDD001	167m	243m	76m	Massive –semi massive chalcopyrite
KLBDD002				NSM
KPIDD001	32m	101m	69m	Strong malachite mineralisation

Note: KPIDD001 is still being drilled. Target depth 250 metres.



KIPOI CENTRAL PROSPECT

Drillhole Section on 8,756,220mN



- An aggressive work programme is planned for 2007.
Objectives include:

- drill evaluation of all known deposits
- delineate a Cu resource of between 300,000 – 500,000 tonnes
- detailed geological investigation to discover new zones of mineralisation in project area

- Two diamond rigs will be on site early 2007 to drill out Kipoi Central

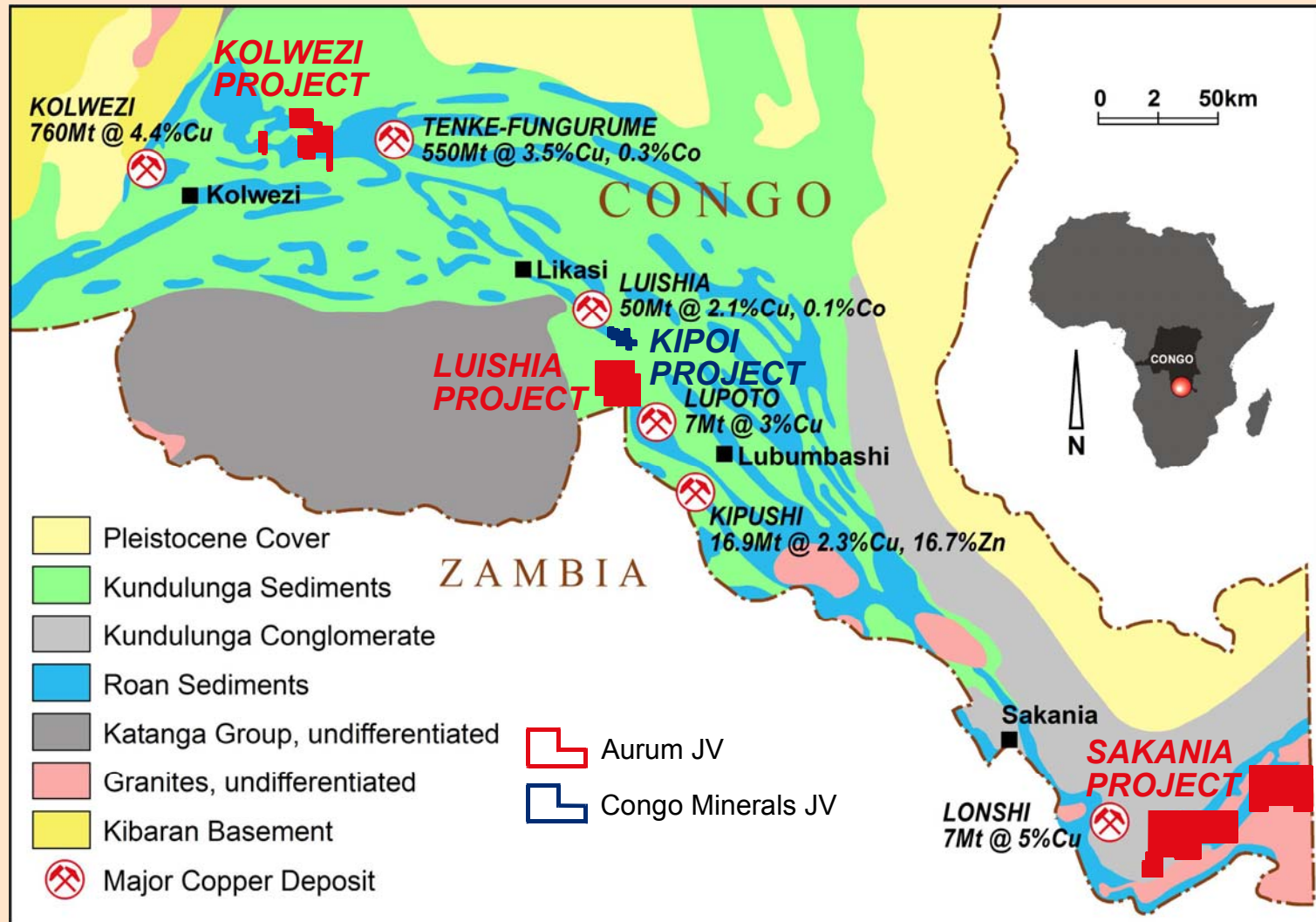
- RC rig to be used determine extent of mineralisation at other deposits

- Tiger has the right to earn an interest of up to 70% interest in each of 7 Permits: 1961,1962,2133,2138,2508.2139,2214
- Permits all located in the Katanga Province and situated in proximity of Kolwezi (west), Lukasi (central) and Sakania (southeast)
- All permits prospective for polymetallic deposits of Copper, Cobalt, Gold, PGE's and Uranium.
- Regional mapping shows Permits 1961 and 1962 cover large areas of Roan Sediments.
- On PR 2214 results of 0.40% Cu and 0.32% Co from extensive artisanal working

- A 400m X 50m soil sampling program carried out on PR's 1961 & 1962.
- Five strong , coherent Cu anomalies delineated in PR 1961. Largest covers an area of 2.8 sq km.
- Large 5.6 sq km Cu anomaly identified on PR 2214 up to 500 ppm.
- All anomalies overlie Roan sediments
- A 200mX50m soil sampling program carried out over 4 priority targets
- Significant Cu anomaly defined over massive gossanous cap with rock chips up to 0.4% Cu
- Anomalies to be followed up by an Aircore drilling programme in early 2007

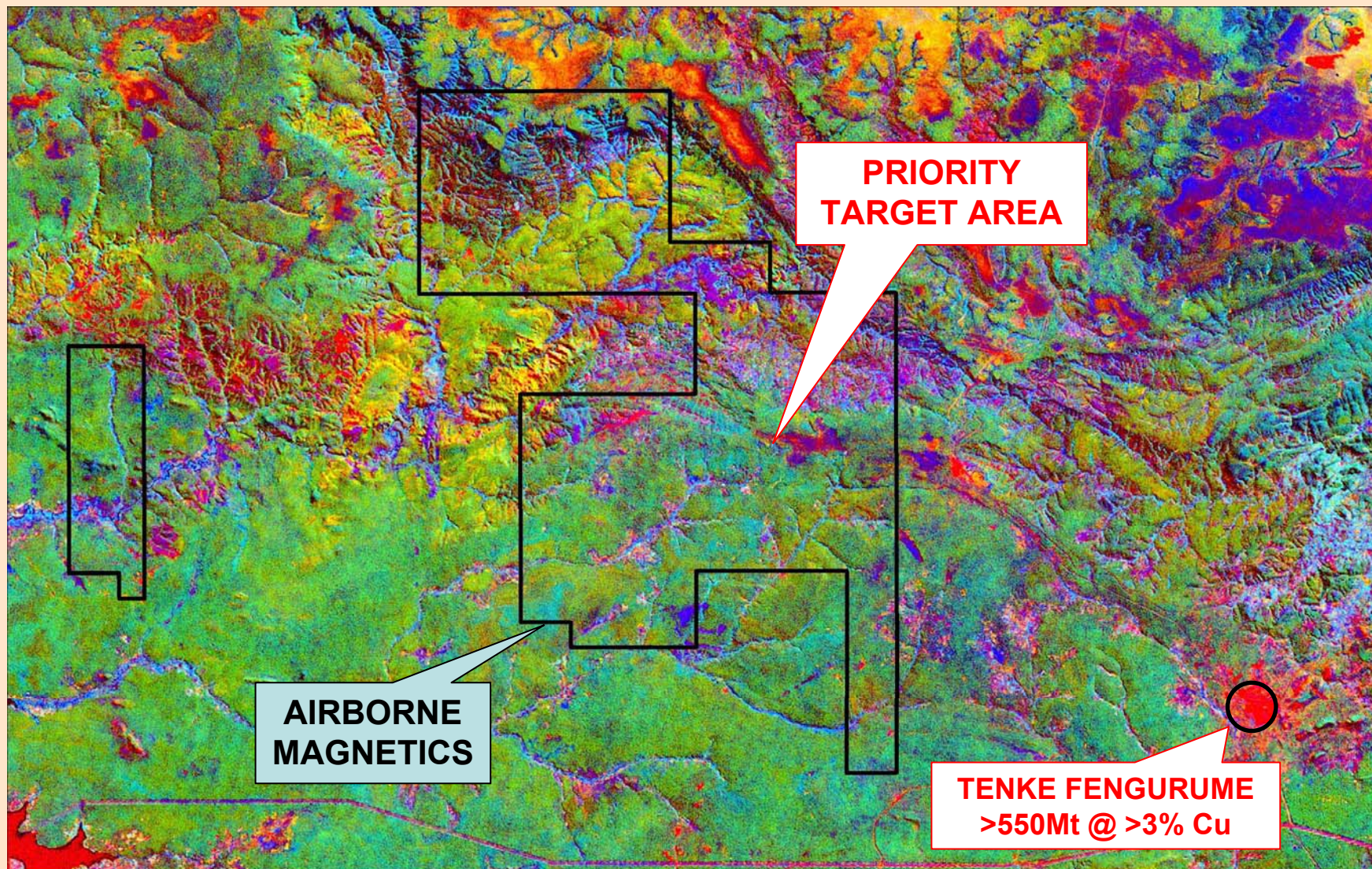
KATANGA COPPERBELT DRC

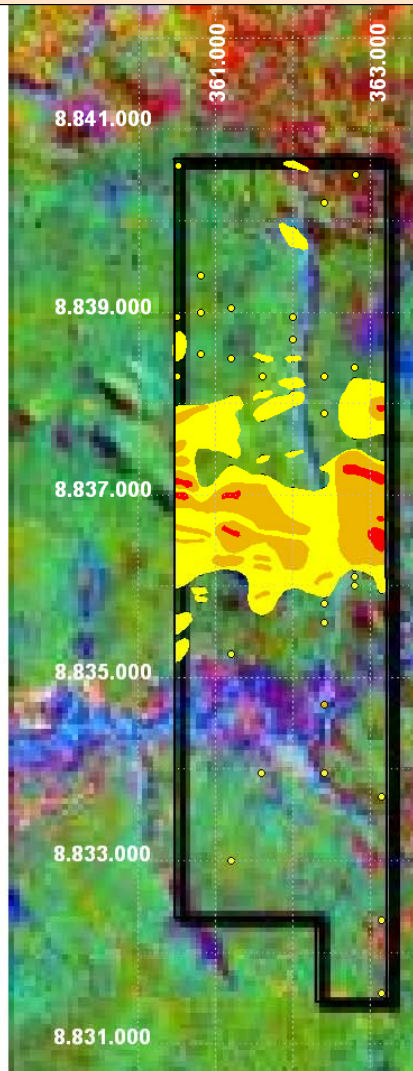
Regional Geology and Project Location



KOLWEZI PROJECT AREA

Landsat, Geophysics, Targets



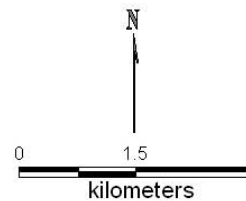


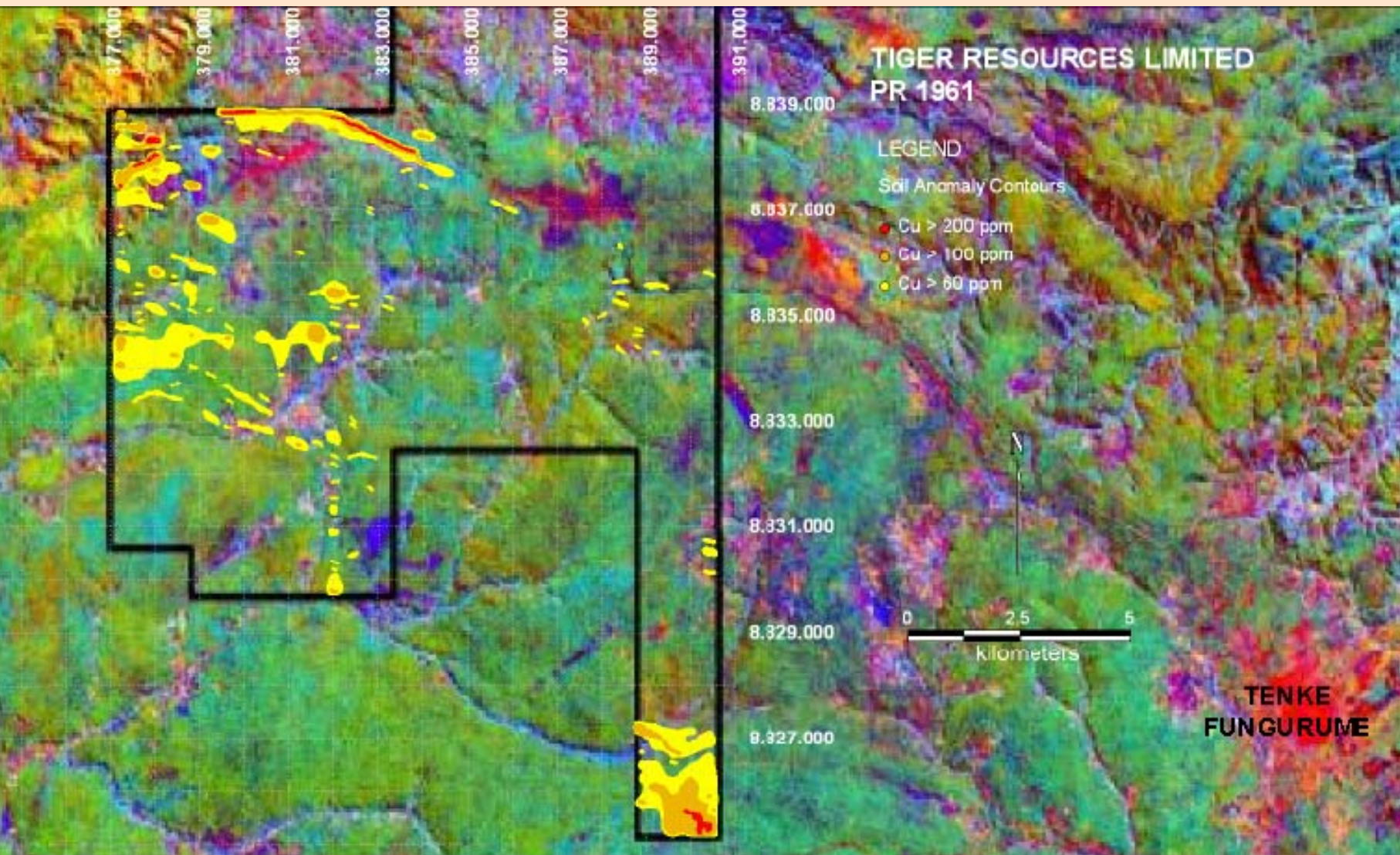
TIGER RESOURCES LIMITED PR 1962

LEGEND

Soil Anomaly Contours

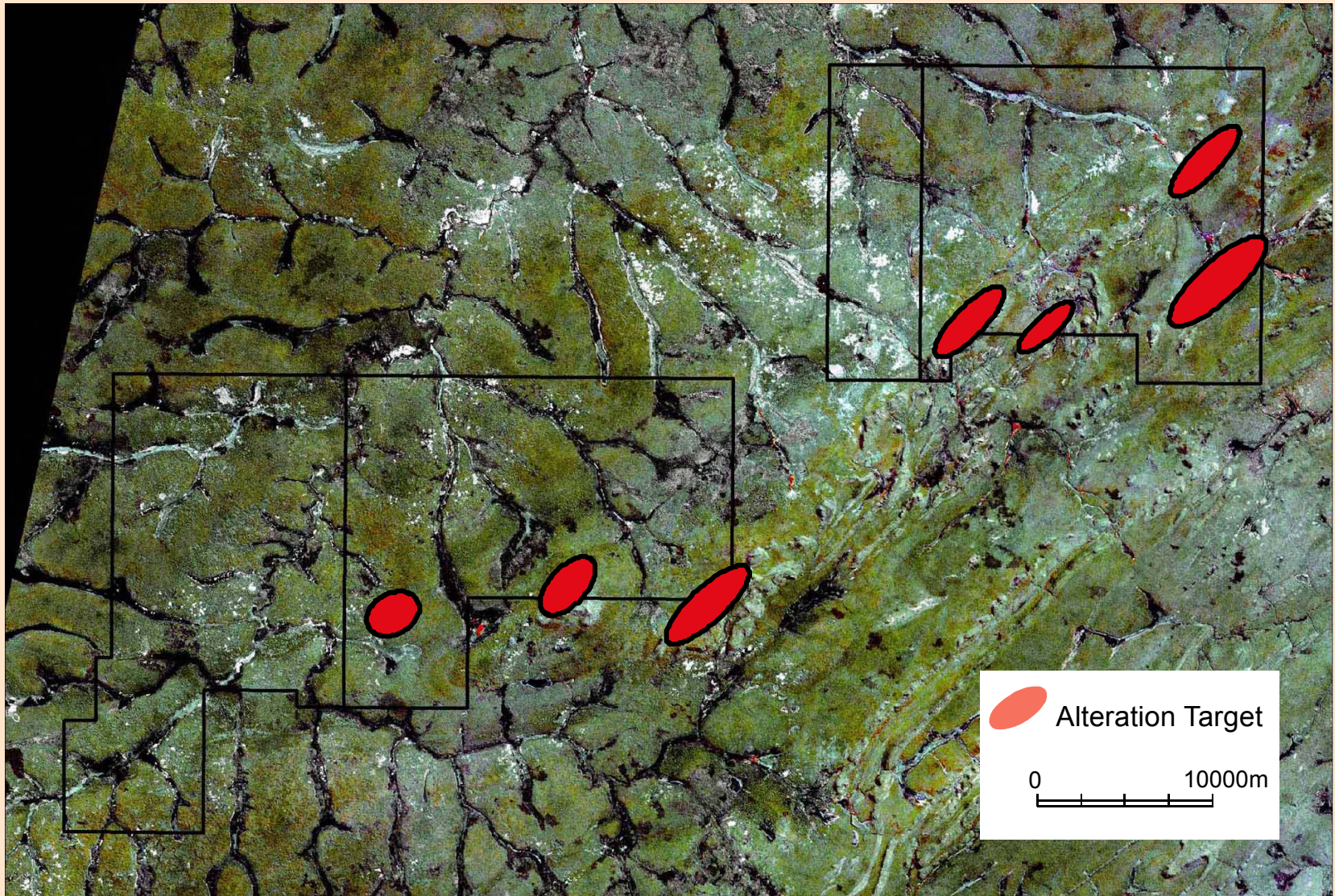
- Cu > 200 ppm
- Cu > 100 ppm
- Cu > 60 ppm





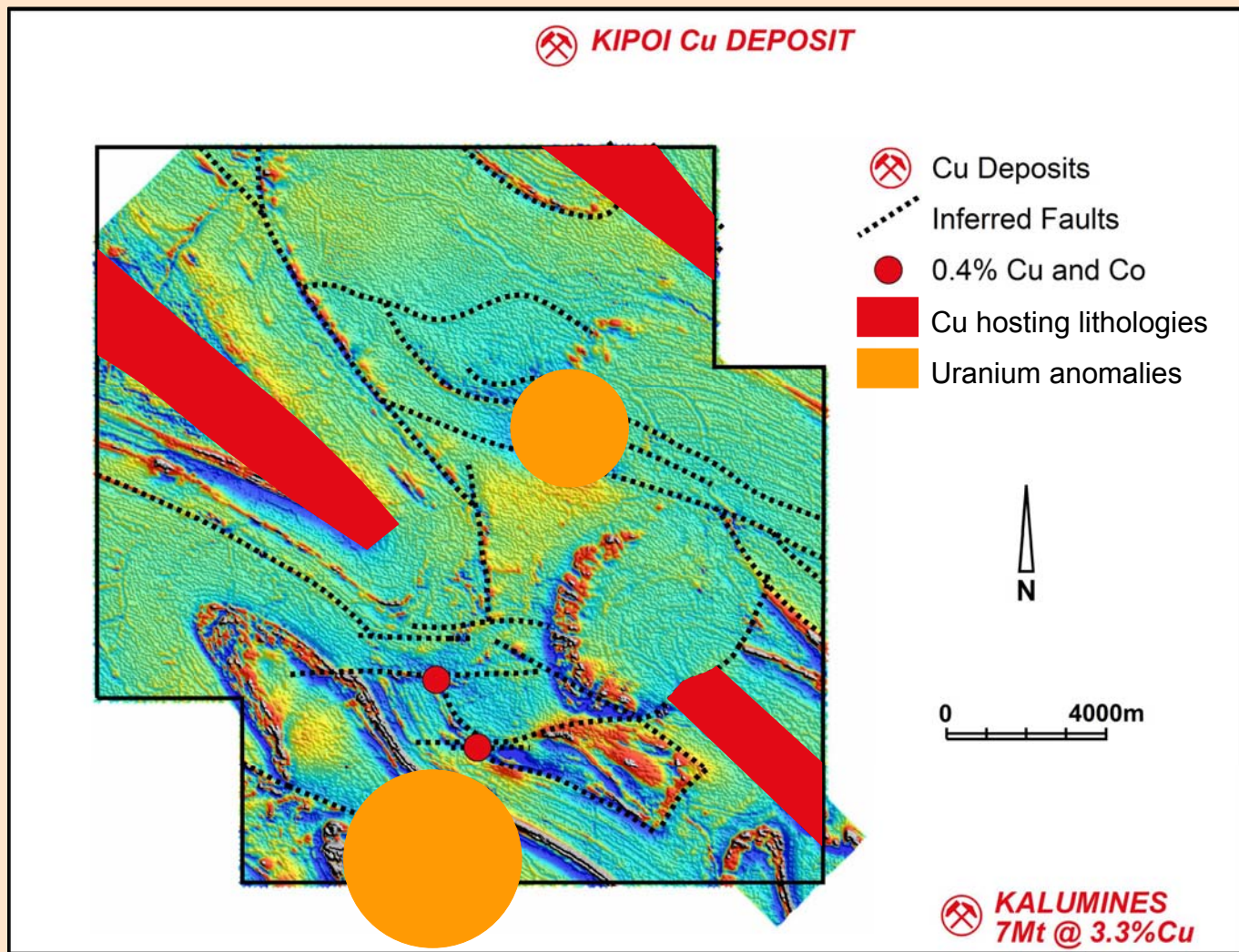
SAKANIA PROJECT

Landsat Image + Alteration Targets

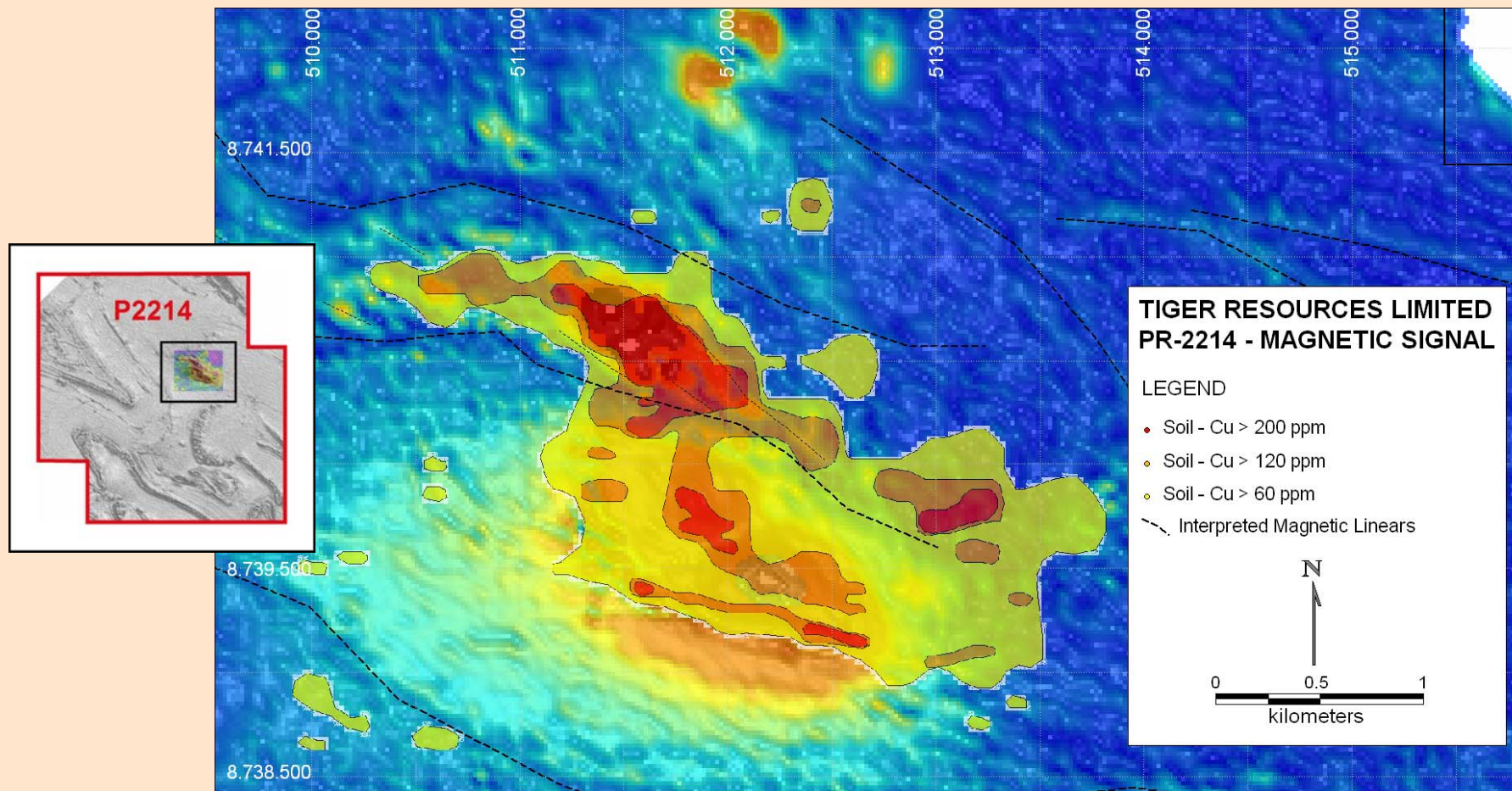


LUISHIA PROJECT

Geophysics and Priority Targets

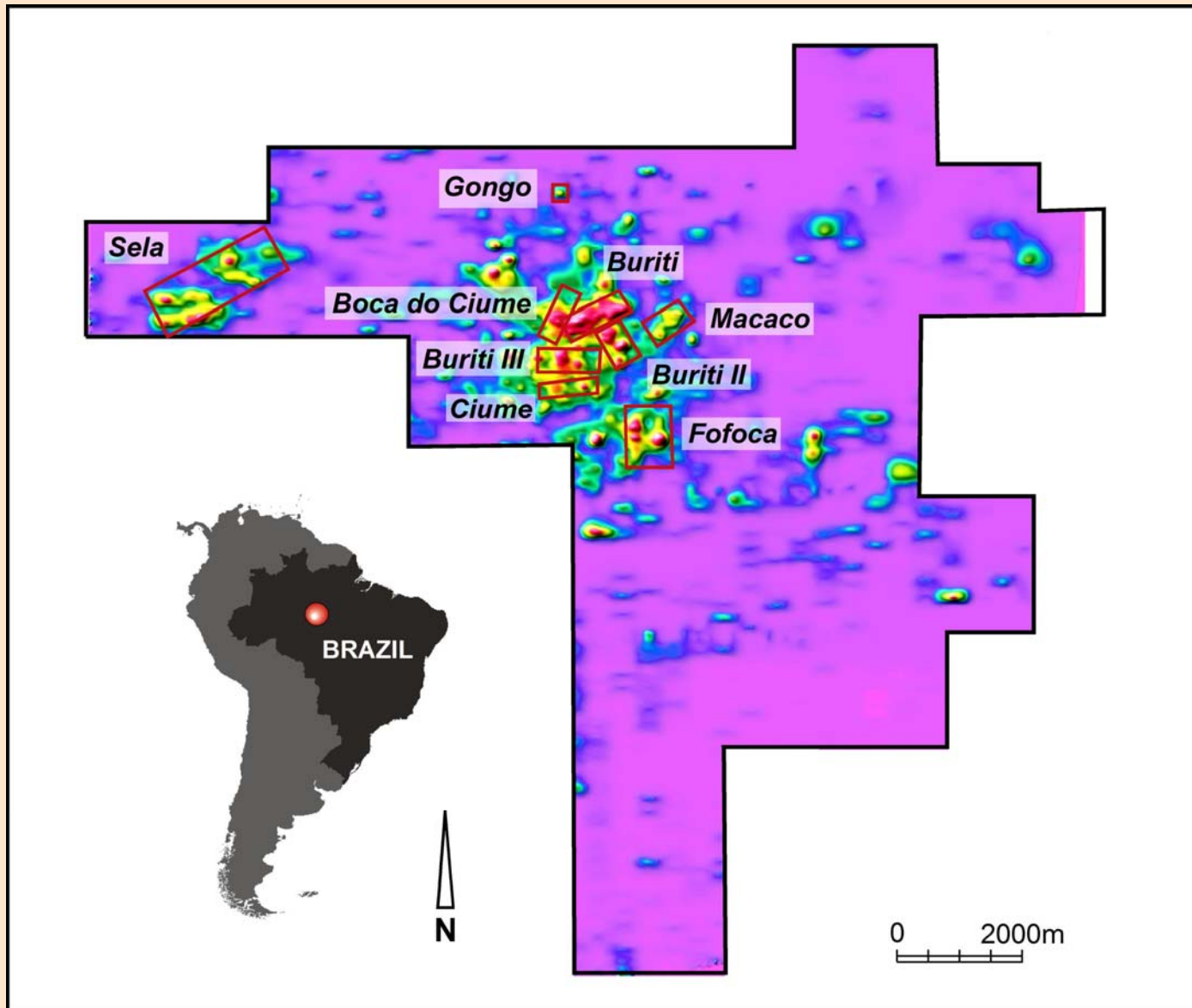


LUISHIA PROJECT AREA (PR2214) CU IN SOIL (PPM) ANOMALIES ON MAGNETICS



- Project located in Tapajos Gold Province of Brazil
- Permit covers an area of 96 sq km and covers a drainage system estimated to have produced over 20 tonnes of alluvial gold
- Primary gold mineralisation is associated with quartz veins and stockworks hosted in hydrothermally altered granites.
- TGS has acquired a right to earn a 90% interest in the project.

ROSA DE MAIO PROJECT, BRAZIL GOLD IN SOILS IMAGE & TARGET LOCATIONS



- Airborne magentics & radiometrics survey
- Mapping and soil sampling survey over concession
- Reconnaissance surveys identified two significant gold in soil anomalies, the Buruti and the Sela target areas.
- Both targets areas contain gold mineralised & hydrothermally altered granite outcrops,
- Detailed investigation of anomalies in progress
- Infill soil sampling, IP geophysical survey, auger drilling programme

Thank You For Your Time and
Continued Support of Tiger Resources



Tiger Resources Limited

30 Ledger Road

Balcatta 6021 Western Australia

Tel: + 61 892401033 Fax: +61 892402406

Email: tiger@tigerez.com.au

Web site: www.tigerez.com