

Transitioning from Explorer to Developer

March 2008

**David Young
Managing Director**



Disclaimer

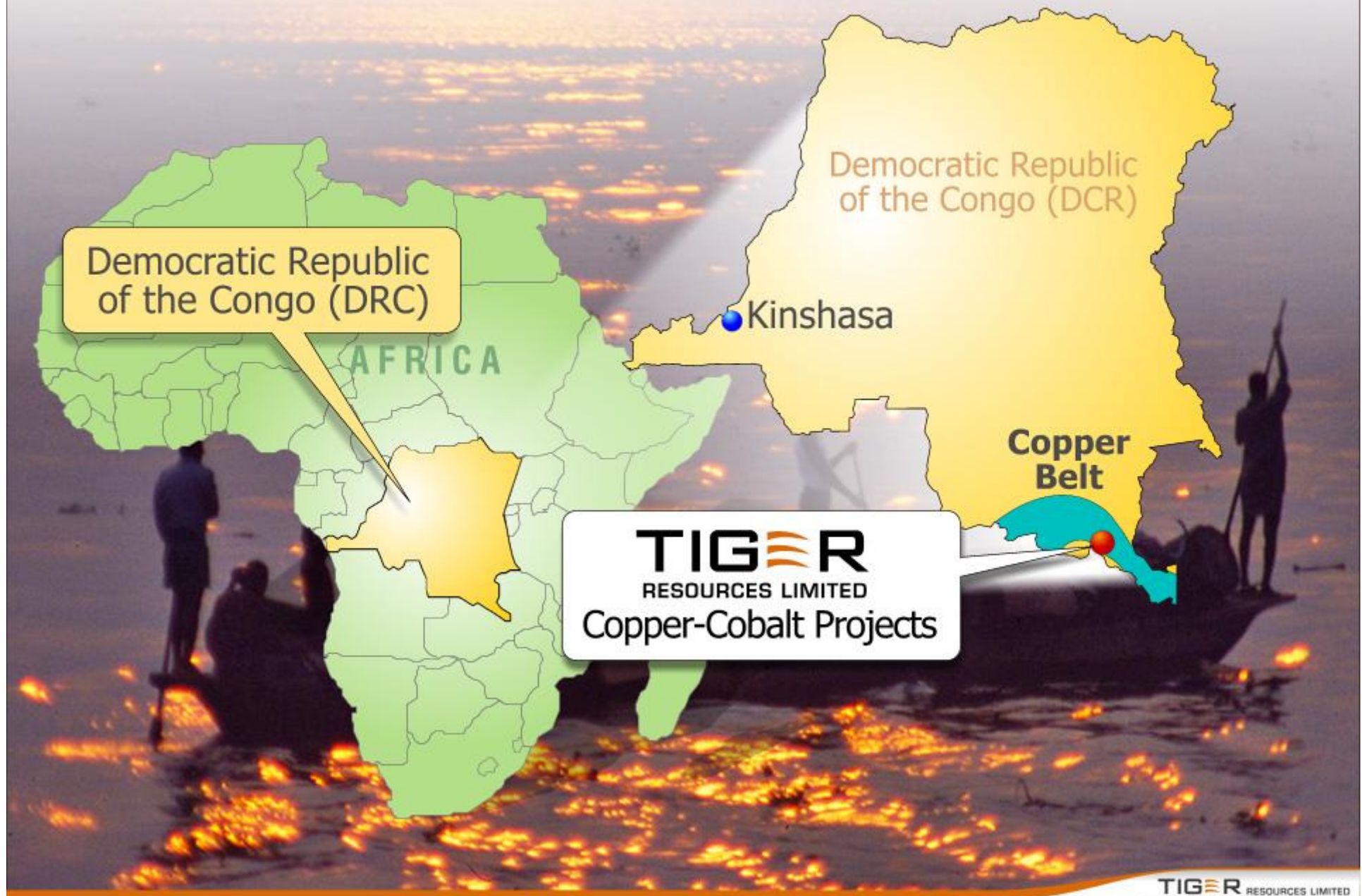
Reliance on third party information

The views expressed in this presentation contain information that has been derived from publicly available company sources. The accuracy, completeness or reliability of the information has not been independently verified and no representation or warranty is made as to its accuracy or completeness. This presentation should not be relied upon as a recommendation or forecast by Tiger Resources Limited.

Forward looking statements

This presentation includes forward-looking statements. Such statements relate to future events and expectations and involve known and unknown risks and uncertainties and other factors, many of which are beyond our control, and which may cause actual results to differ materially from those expressed in the statements contained in this presentation. Tiger Resource's actual results or actions may differ materially from those projected in the forward-looking statements. These forward-looking statements are not guarantees or predictions of future performance.

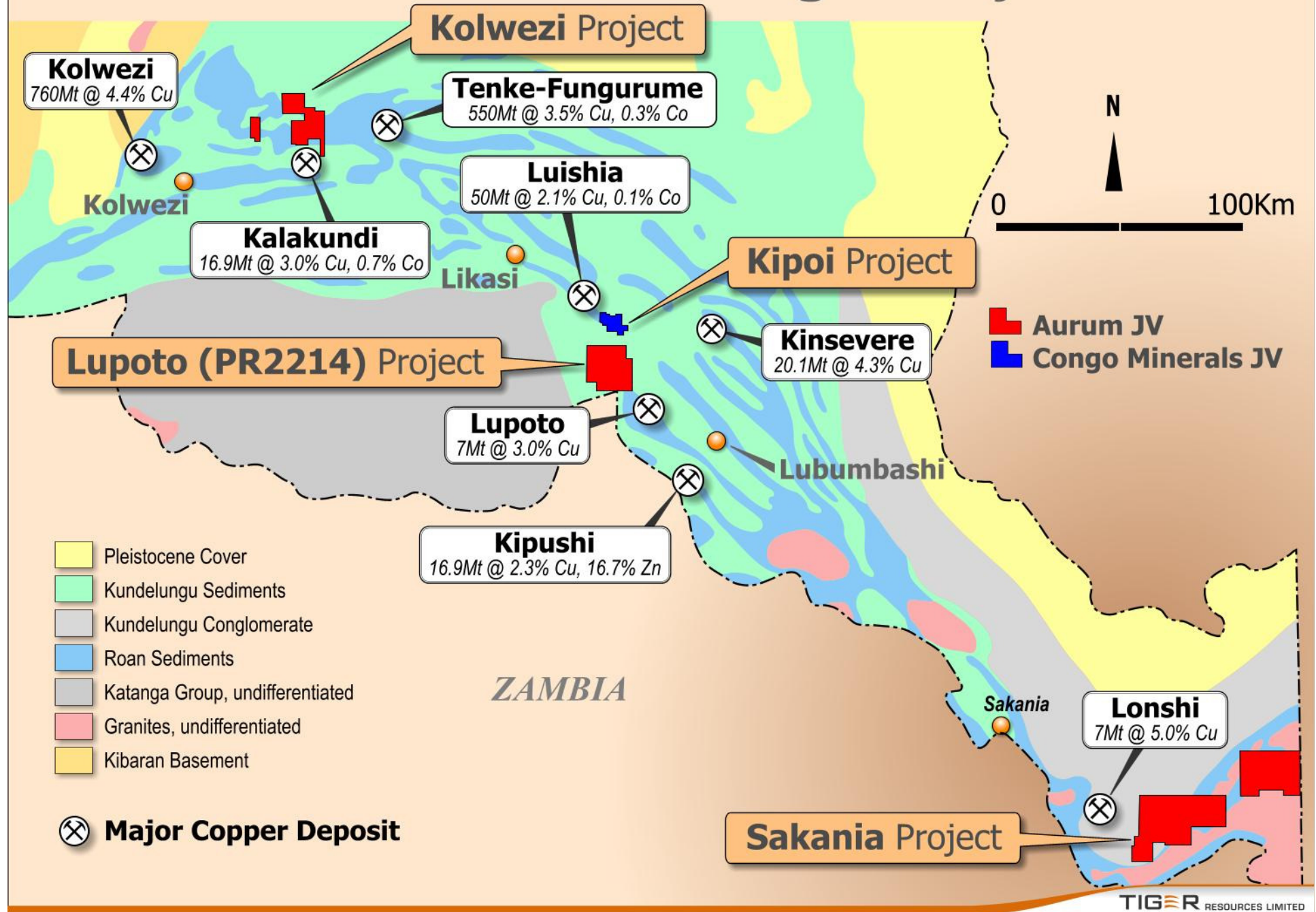
The Democratic Republic of the Congo



Tiger Resources . . .

- Listed on the ASX, (code TGS)
- Seeking TSX listing in April 2008
- Exploring, developing and acquiring copper cobalt projects in the DRC
- Corporate Office in Perth
- Country Office in Lubumbashi
- Operational Base at Kipoi Project

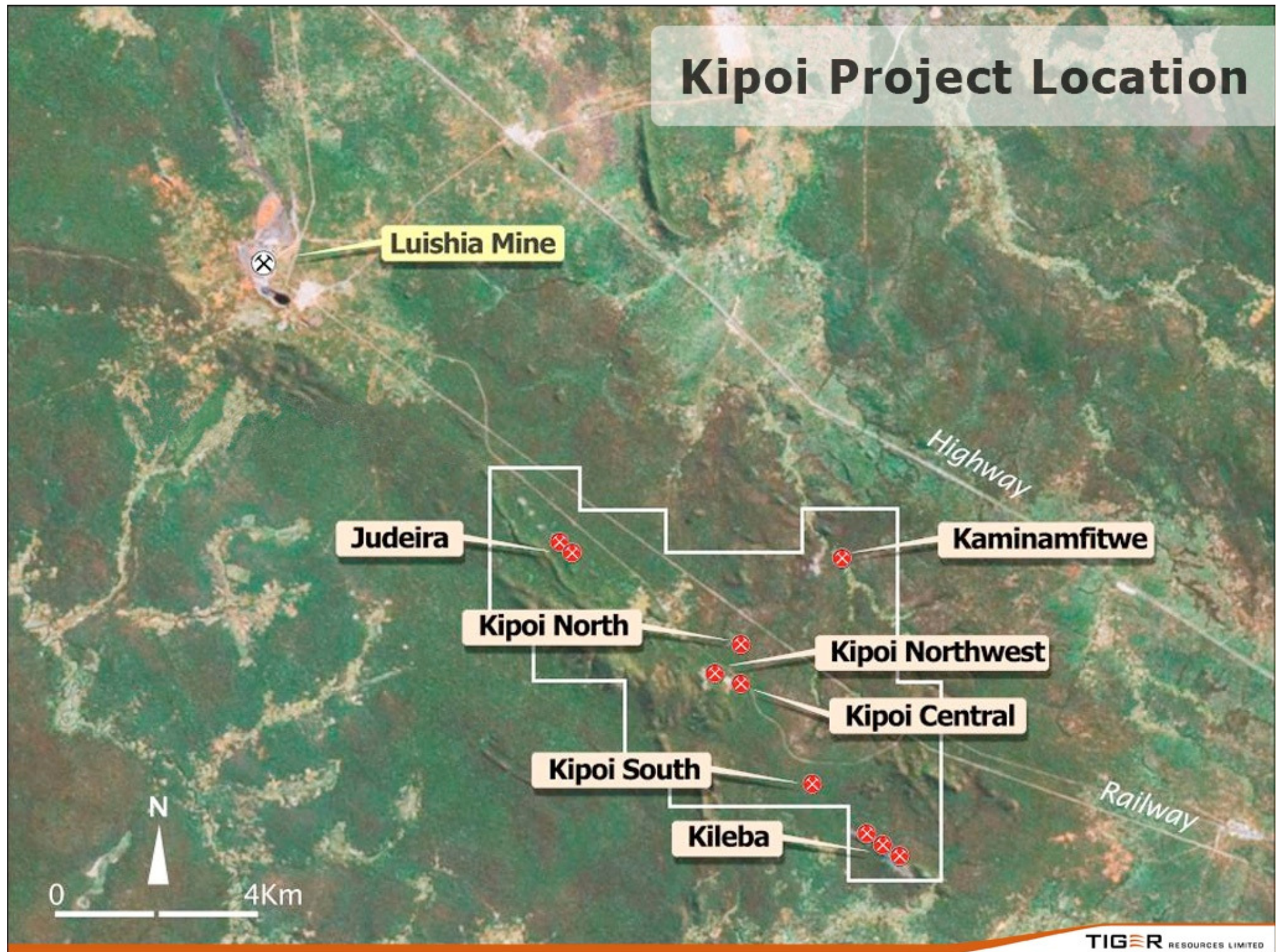
Katanga - Project Location

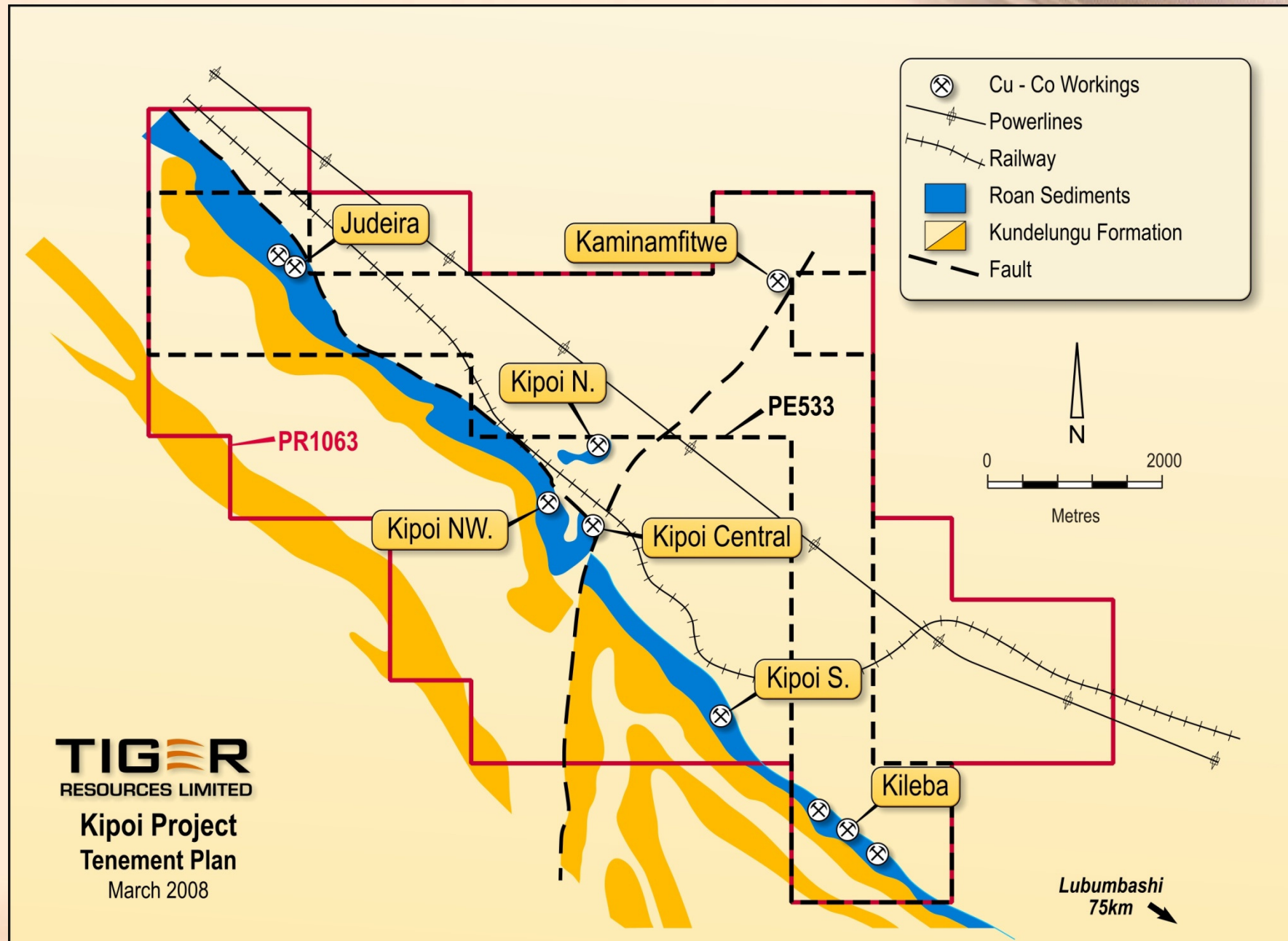


. . From Explorer . . To Producer . . Quickly

- July 2006 HOA Congo Minerals
- August 2006 Drilling starts at Kipoi
- November 2006 Drilling Starts Kipoi Central
- January 2007 Start Resource Drilling
- May 2007 Start of Pre-feasibility
- March 2008 JORC Resource
- May 2008 Definitive Feasibility Study
- June 2008 Board decision on mining expected

Kipoi Project Location



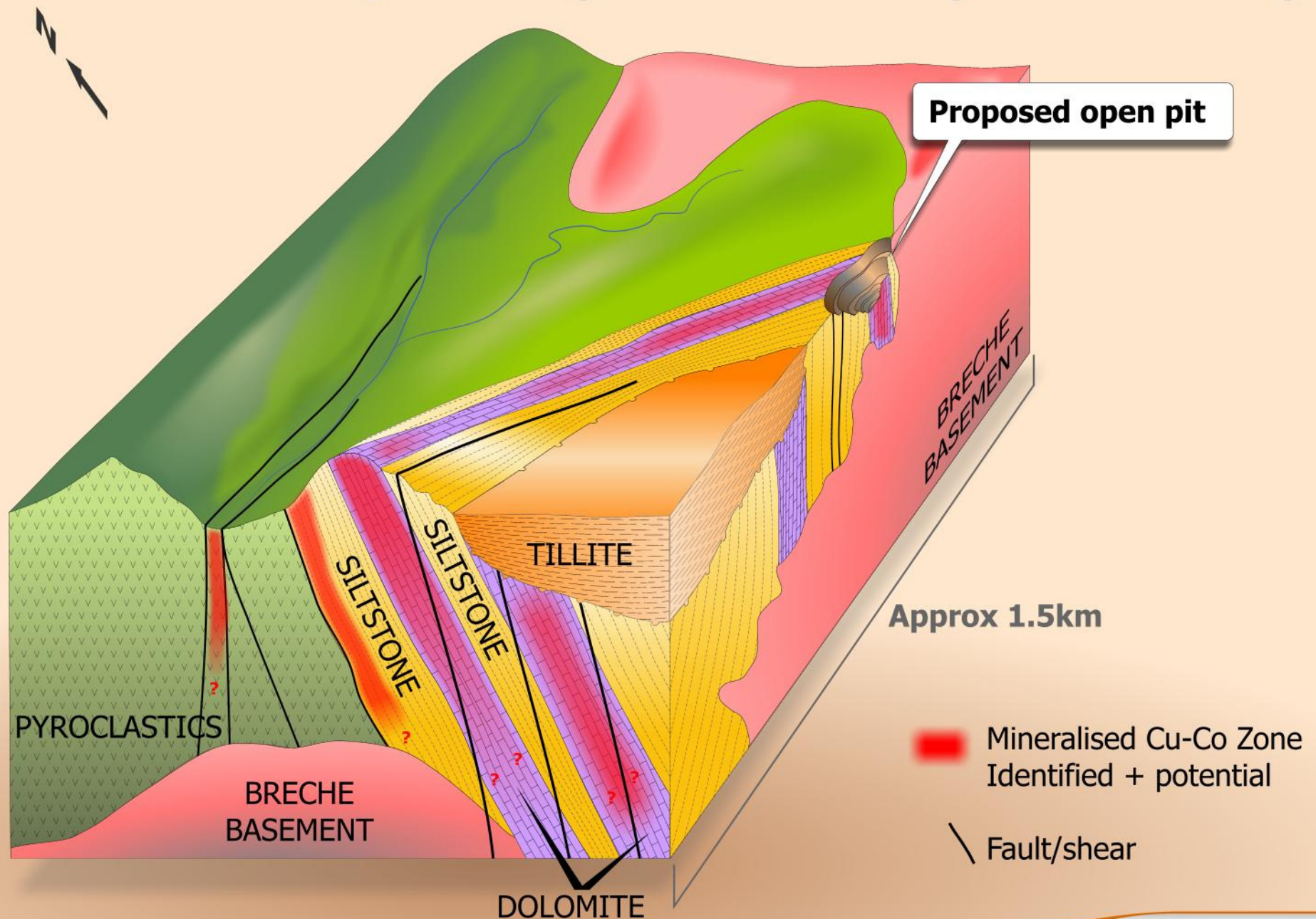


TIGER
RESOURCES LIMITED

**Kipoi Project
Tenement Plan**

March 2008

Kipoi Regional Geological Setting



Kipoi Central

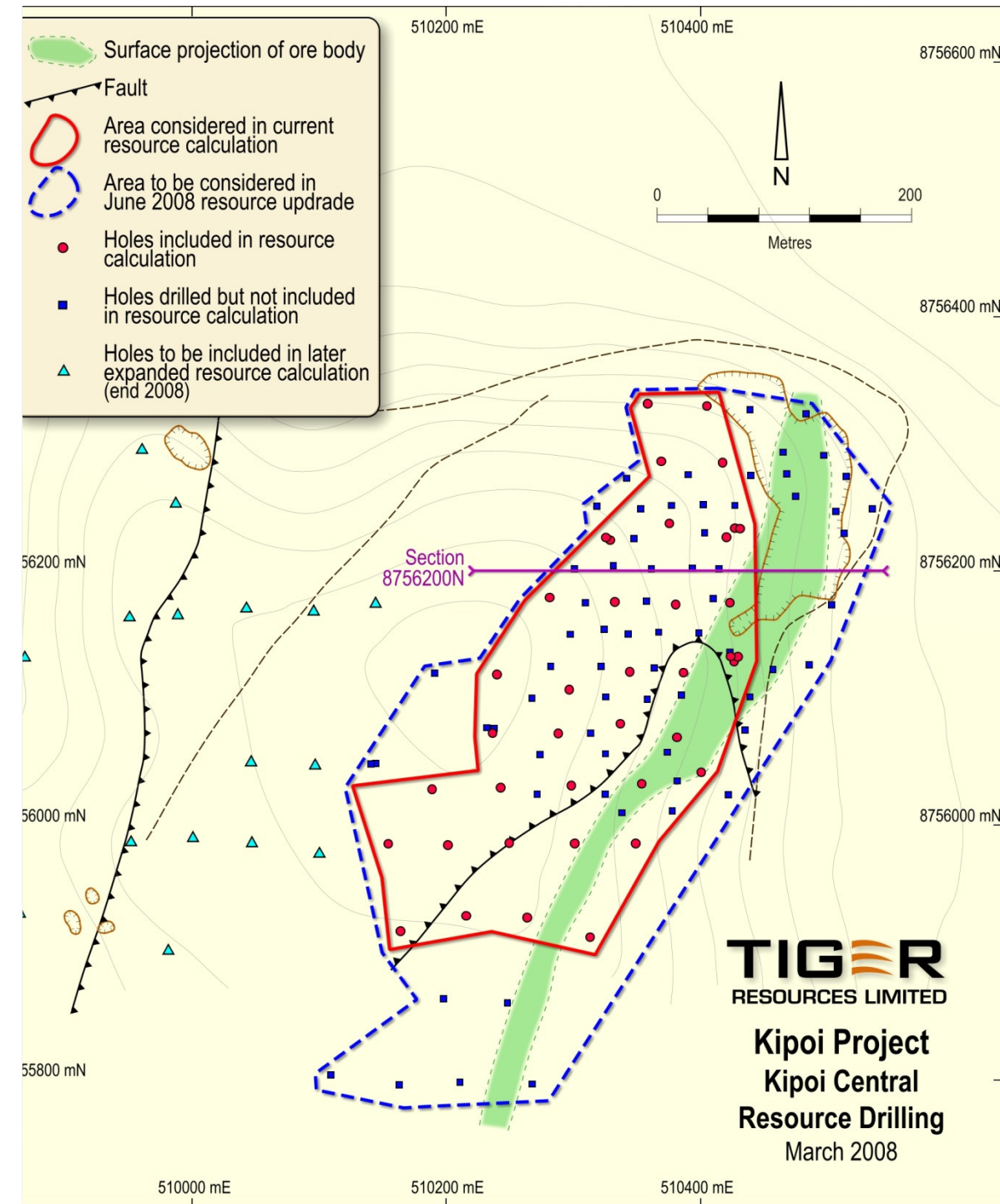




Kipoi Central. . .

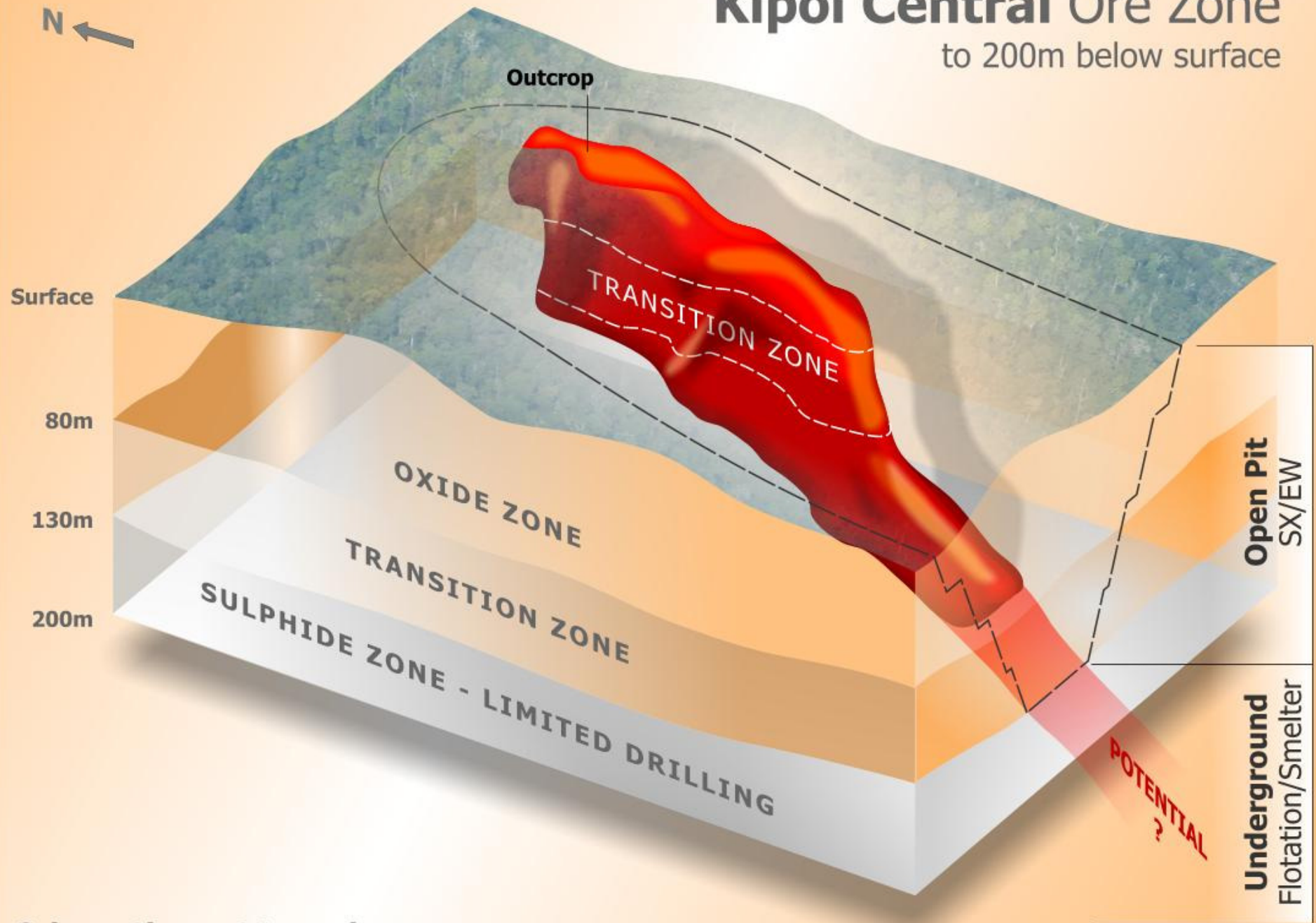
Flagship Kipoi Project, first Resource Statement

- **439,000** tonnes of copper
- **20,000** tonnes of Cobalt
- 1,416,000 ounces of silver
- Inferred Resource of 13.4Mt at 3.3% Cu
- High grade component of Inferred Resource of 3.2Mt at 7.2% Cu
- For 230,000 tonnes of copper, 5,200 tonnes of cobalt & 441,000 ounces silver



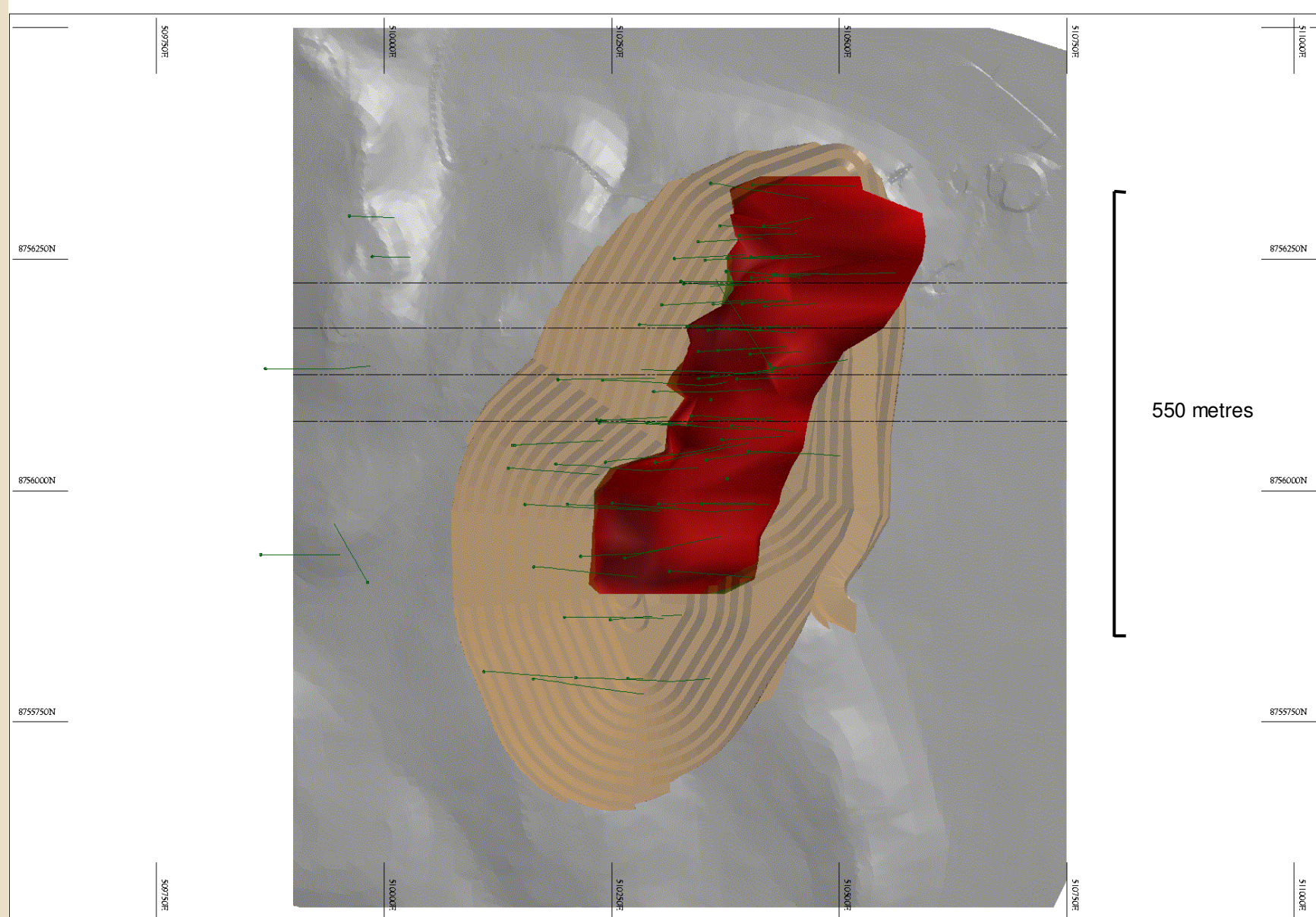
Kipoi Central Resource Statement

Kipoi Central Ore Zone to 200m below surface

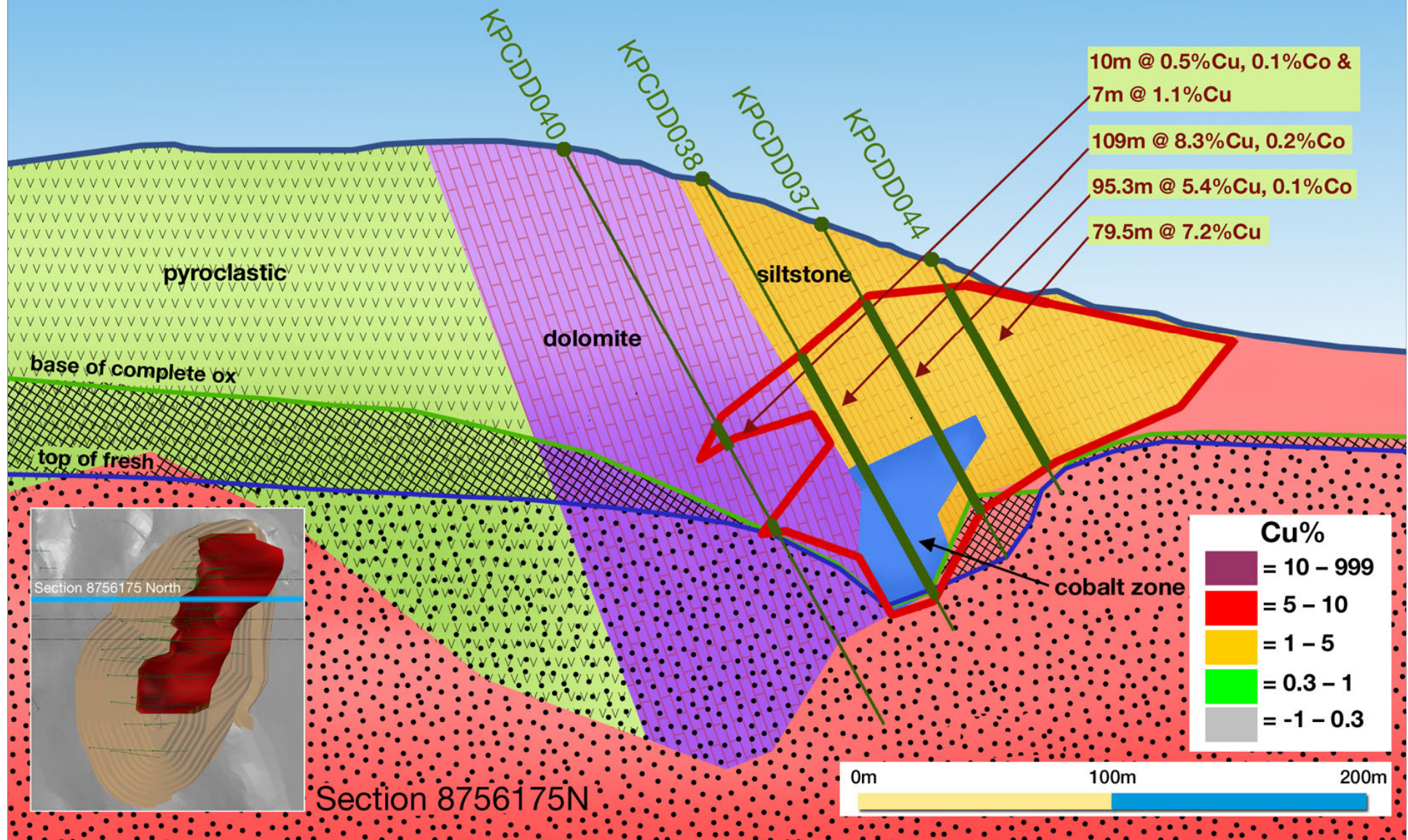


Schematic - not to scale

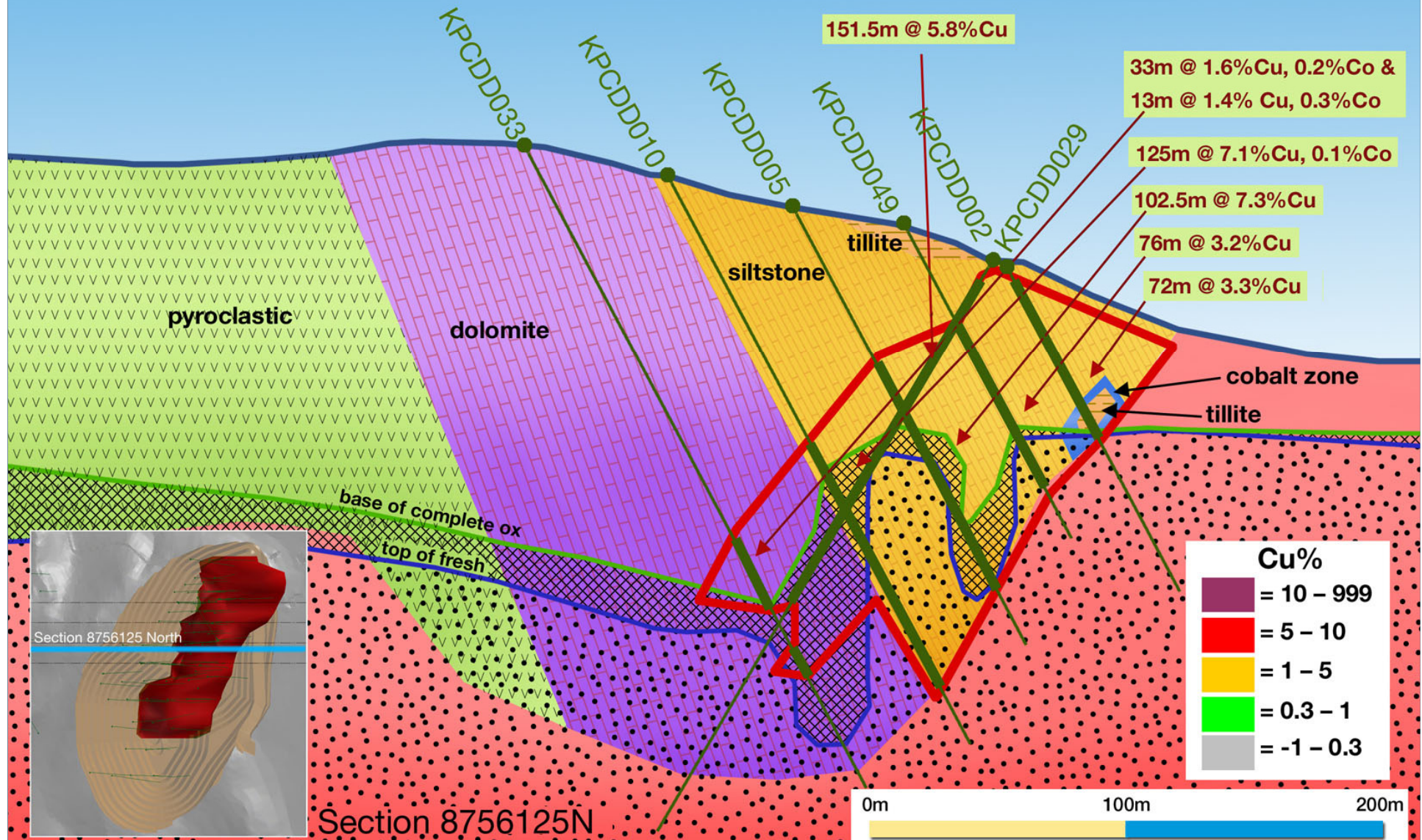
Kipoi Central Fencelines



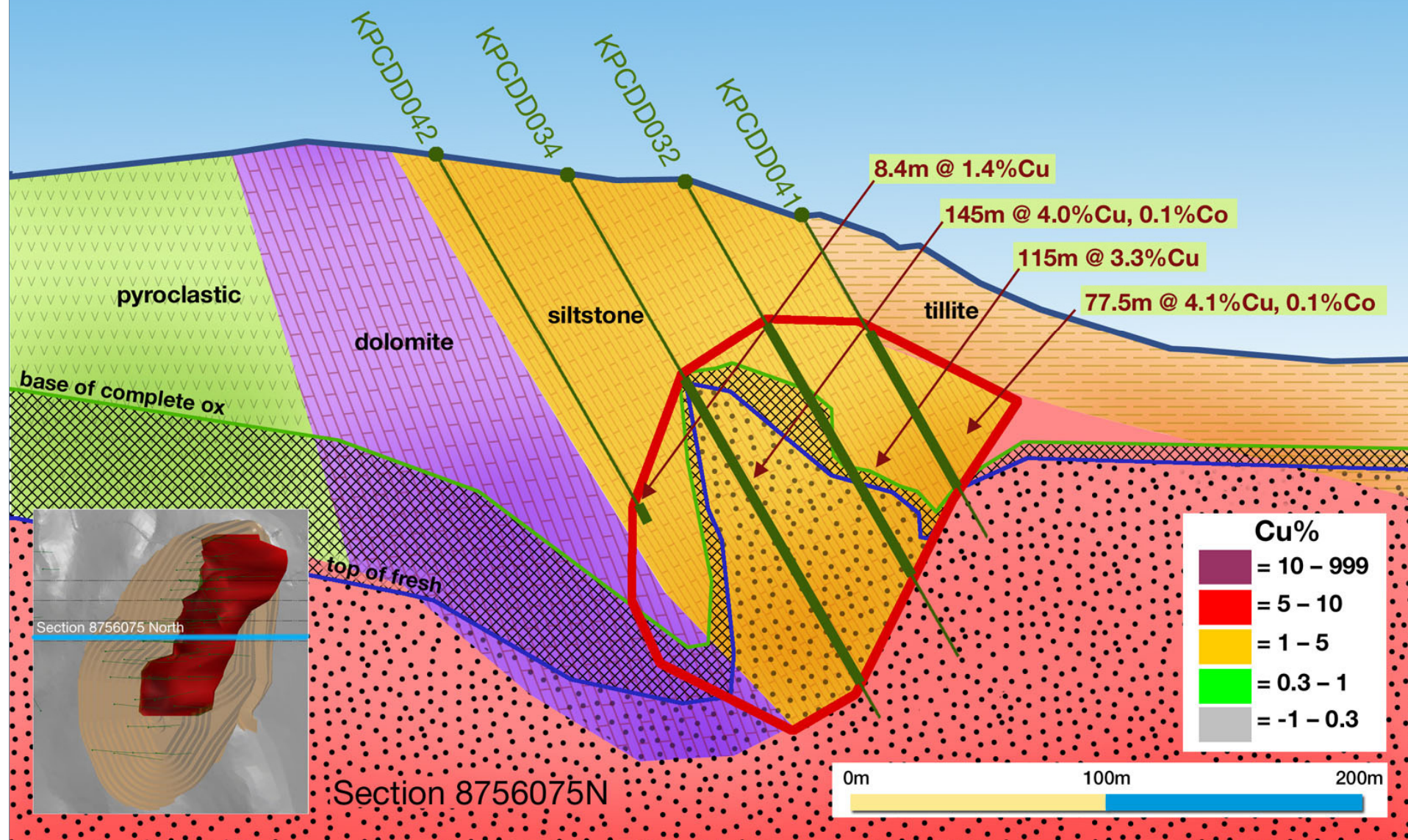
Kipoi Central Resource Drilling



Kipoi Central Resource Drilling

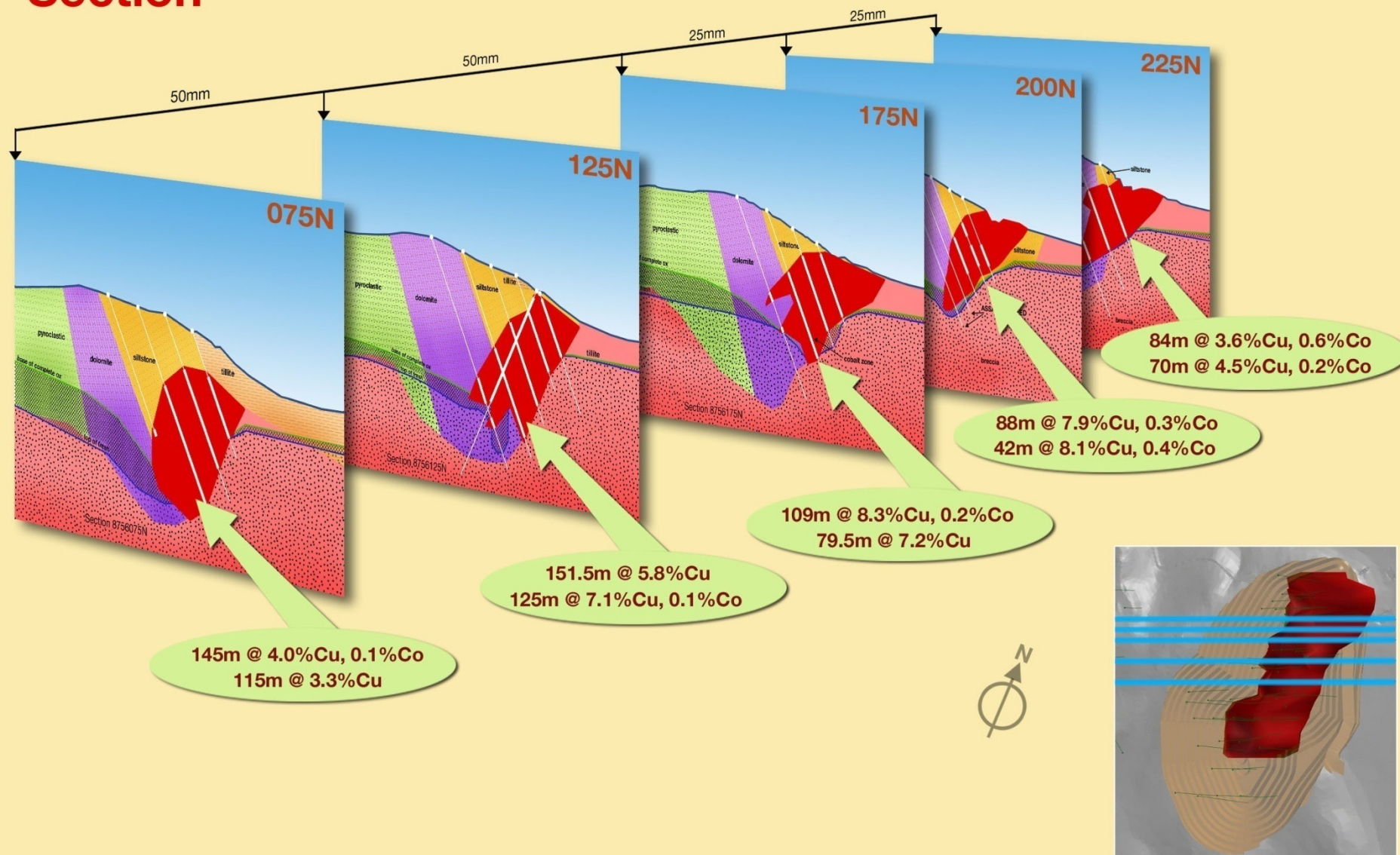


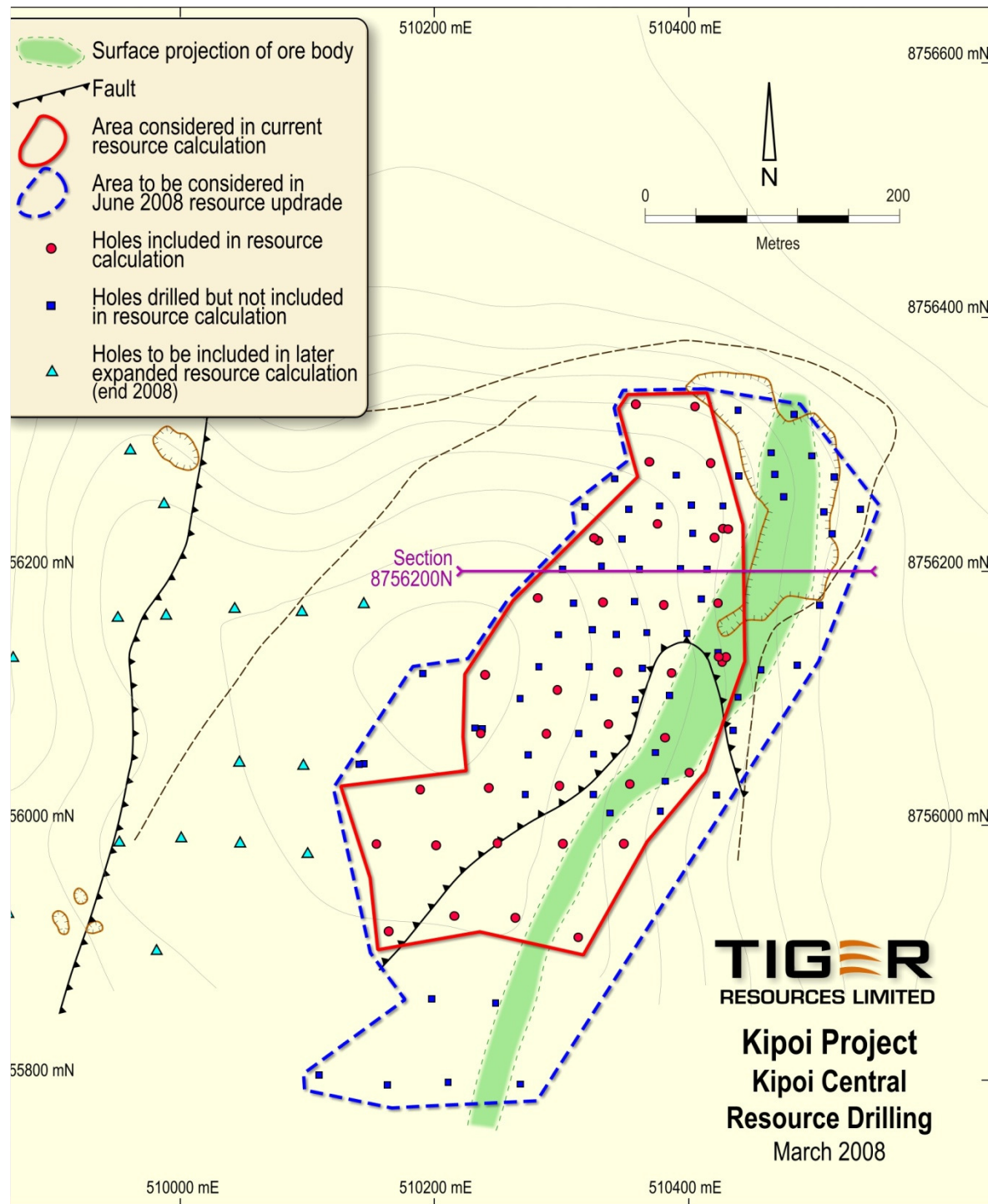
Kipoi Central Resource Drilling



Kipoi Central Ore Body Section

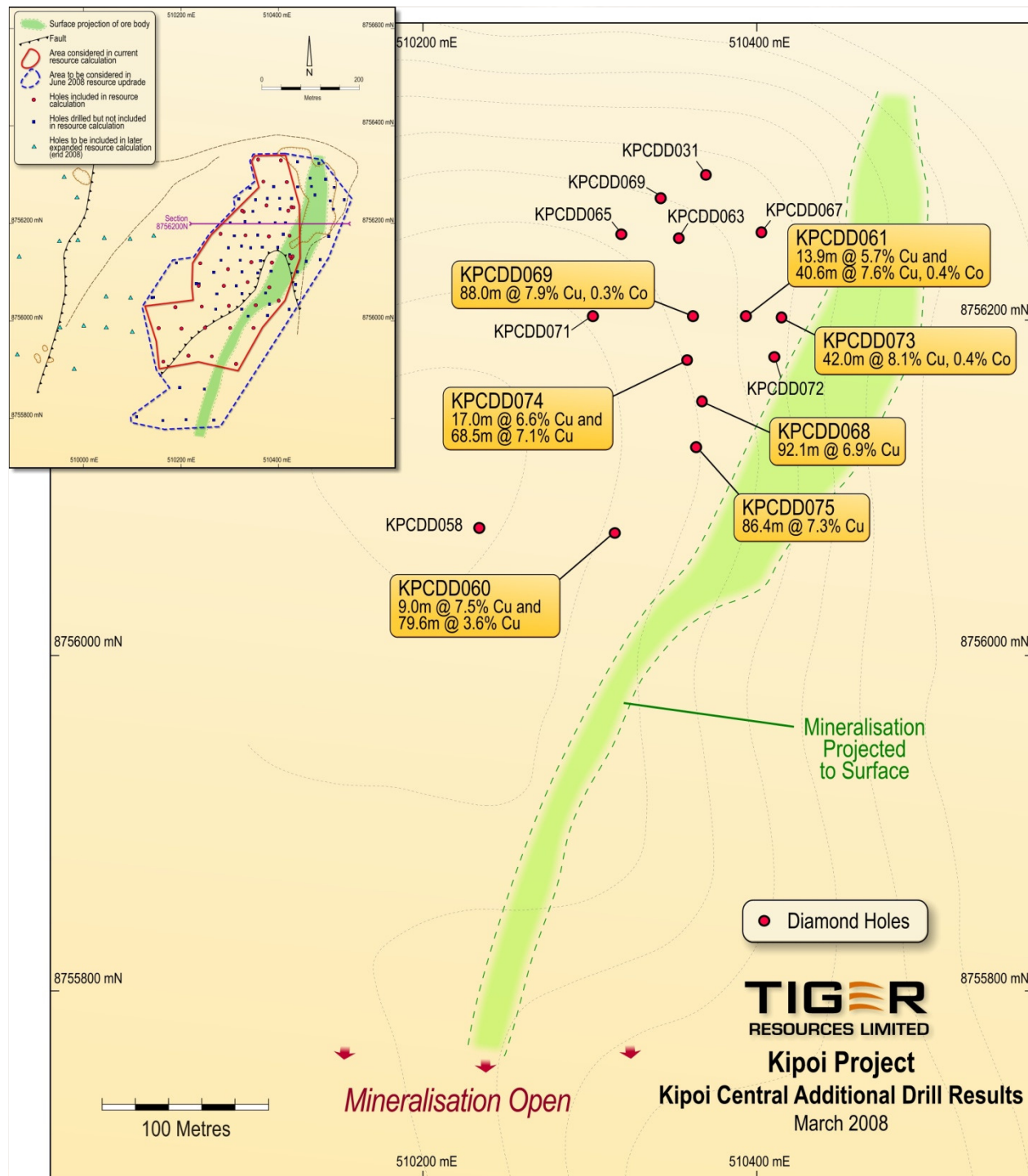
High-grade ore zone continuity





Expanding Kipoi Central Resource Statement

Latest Results Confirm Geology & High Grade Core





Kipoi Central

New significant results from infill drilling include:

- o KPCDD059: 88.0m @ 7.9% Cu and 0.3% Co (includes 16.5m @ 16.5% Cu)
- o KPCDD060: 79.6m @ 3.6% Cu
- o KPCDD061: 40.6m @ 7.6% Cu and 0.8% Co (includes 10.5m @ 19.9% Cu & 1.6% Co)
- o KPCDD068: 92.1m @ 6.9% Cu
- o KPCDD073: 42.0m @ 8.1% Cu and 0.4% Co (includes 13.3m @ 22.5% Cu and 0.7% Co)
- o KPCDD074: 68.5m @ 7.1% Cu
- o KPCDD075: 86.4m @ 7.3% Cu

Results confirm excellent grade continuity of the high grade +7% Cu portion of the JORC resource for Kipoi Central deposit

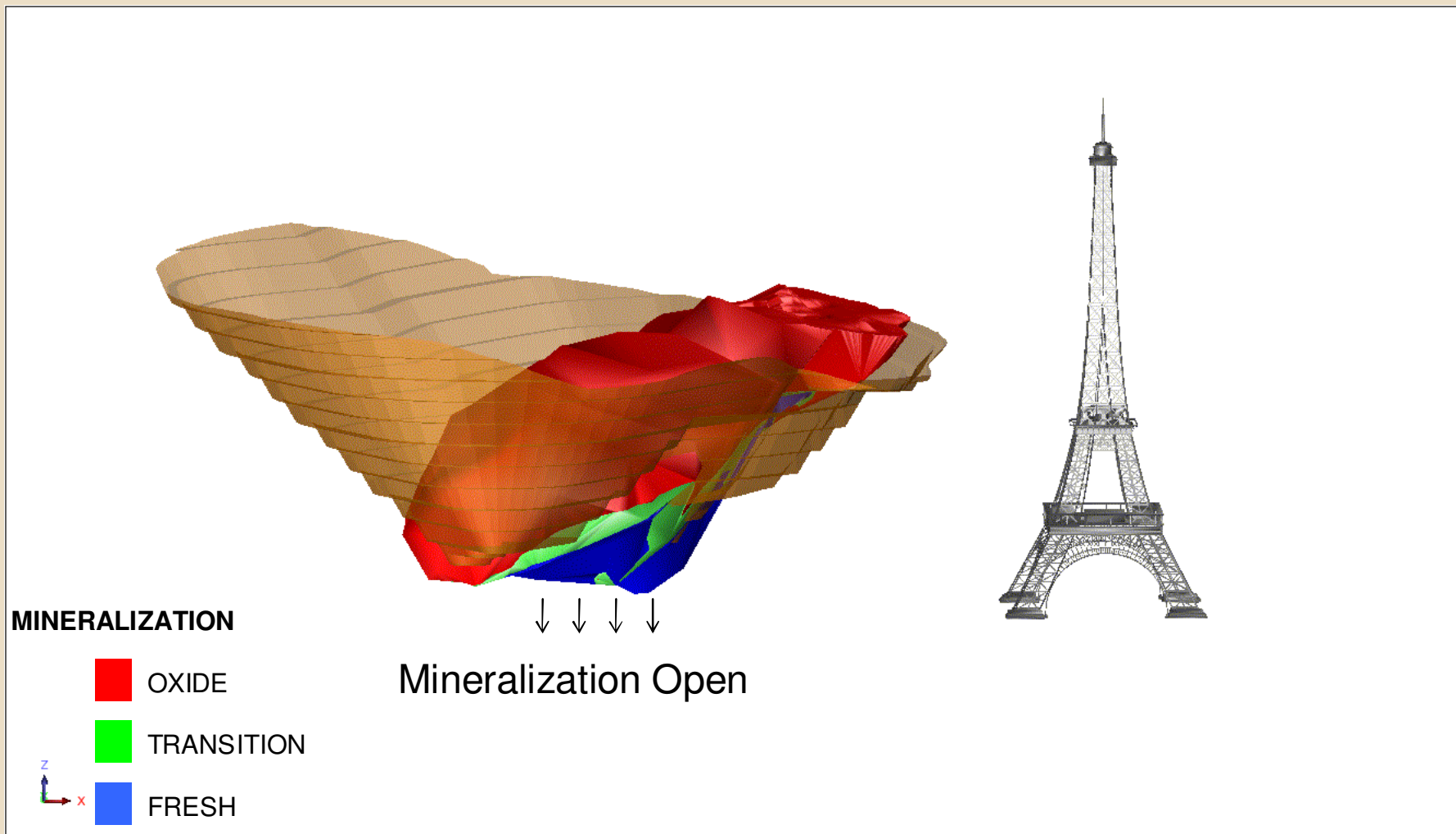
Also confirm the geological model used in the initial resource estimate.

Results to be included in revised resource estimate planned for June 2008.

Kipoi Central Copper Project

- Kipoi Central drilled off, Resources announced
- Project Definition Study
- Pre-Feasibility Study
- Detailed Costing Study
- Tails Storage Facility design
- Environmental approval
- Mining Costing Study
- Infrastructure Design

Potential Pit Design & Ore Body



Kipoi Central Copper Project

- Stage 1 - HMS 0.8Mtpa - 35,000tpa Cu pa
- Stage 2 - SXEW 1Mtpa - 70,000tpa Cu pa
- Stage 3 - Flotation 1Mtpa - 70,000tpa Cu pa
- Stage 4 - SXEW to 2Mtpa - +100,000tpa Cu pa

Stage 1 4Q09
HMS 0.8Mtpa for 35,000tpa Cu pa

Stage 2 4Q12
SXEW 1Mtpa for 70,000tpa Cu pa

Stage 3
Flotation 1Mtpa for 70,000tpa Cu pa

Stage 4
SXEW to 2Mtpa +100,000tpa Cu pa

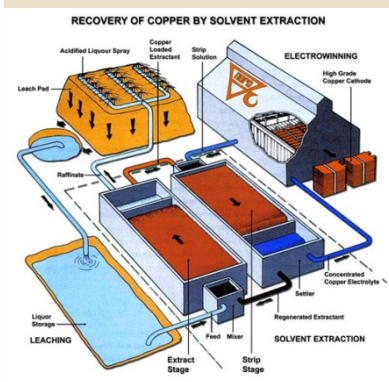


Mining establishment, capital equipment and HMS plant –
with feedstock of +7% Cu

Capital Costs
~ US\$60-70 Million



Cash Generation
~ US\$200million pa



Solvent Extraction Electro-winning (“SX-EW”) plant to treat all
+0.3% Cu from Kipoi Central

Capital Costs
~ US\$200 Million



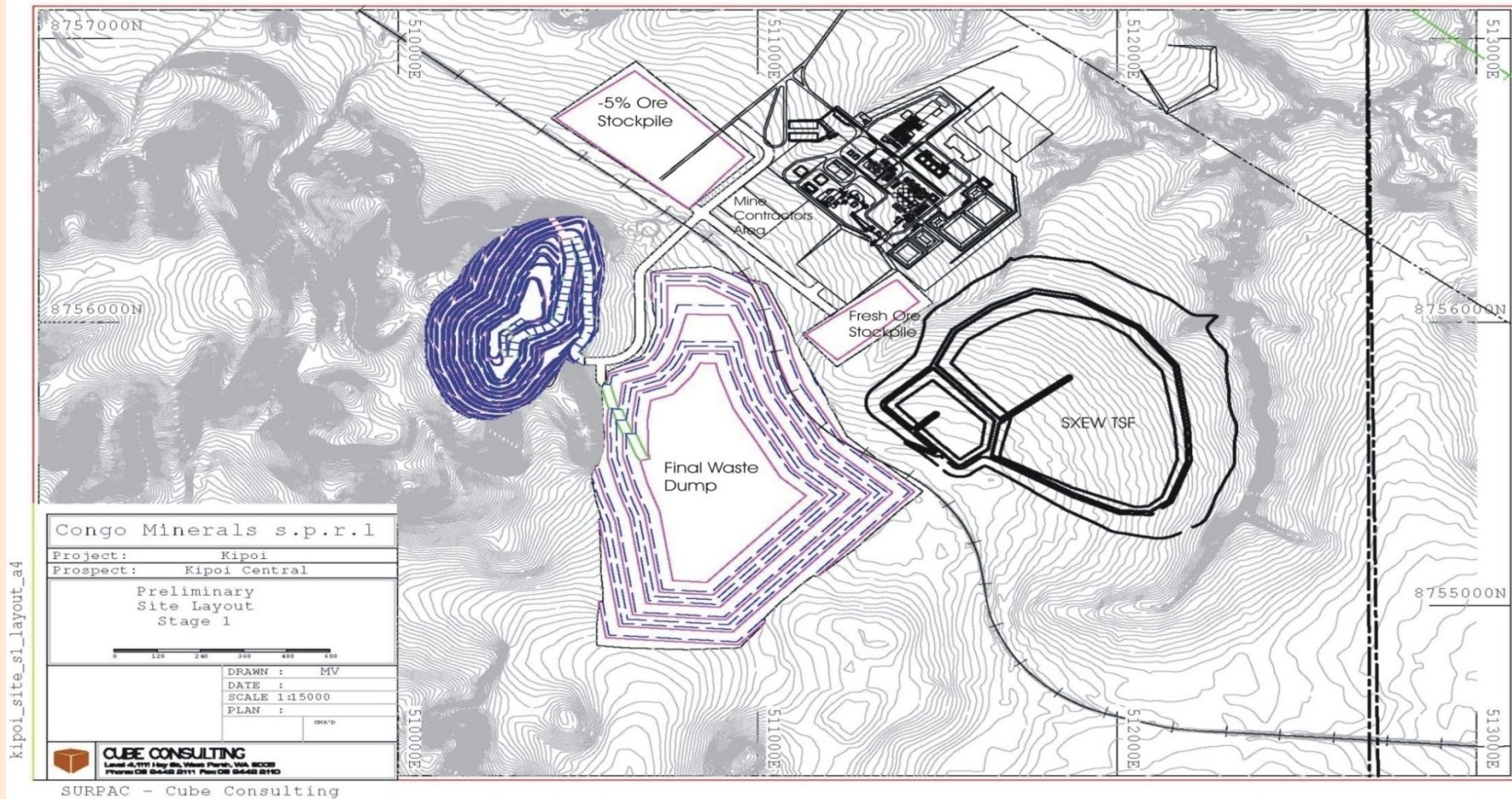
Cash Generation
~ US\$200million pa



All figures and rates based on Kipoi Central only, other
deposits will be factored in as they come on stream

Environmental approvals in place up to and including refinery

Kipoi Central Copper Project

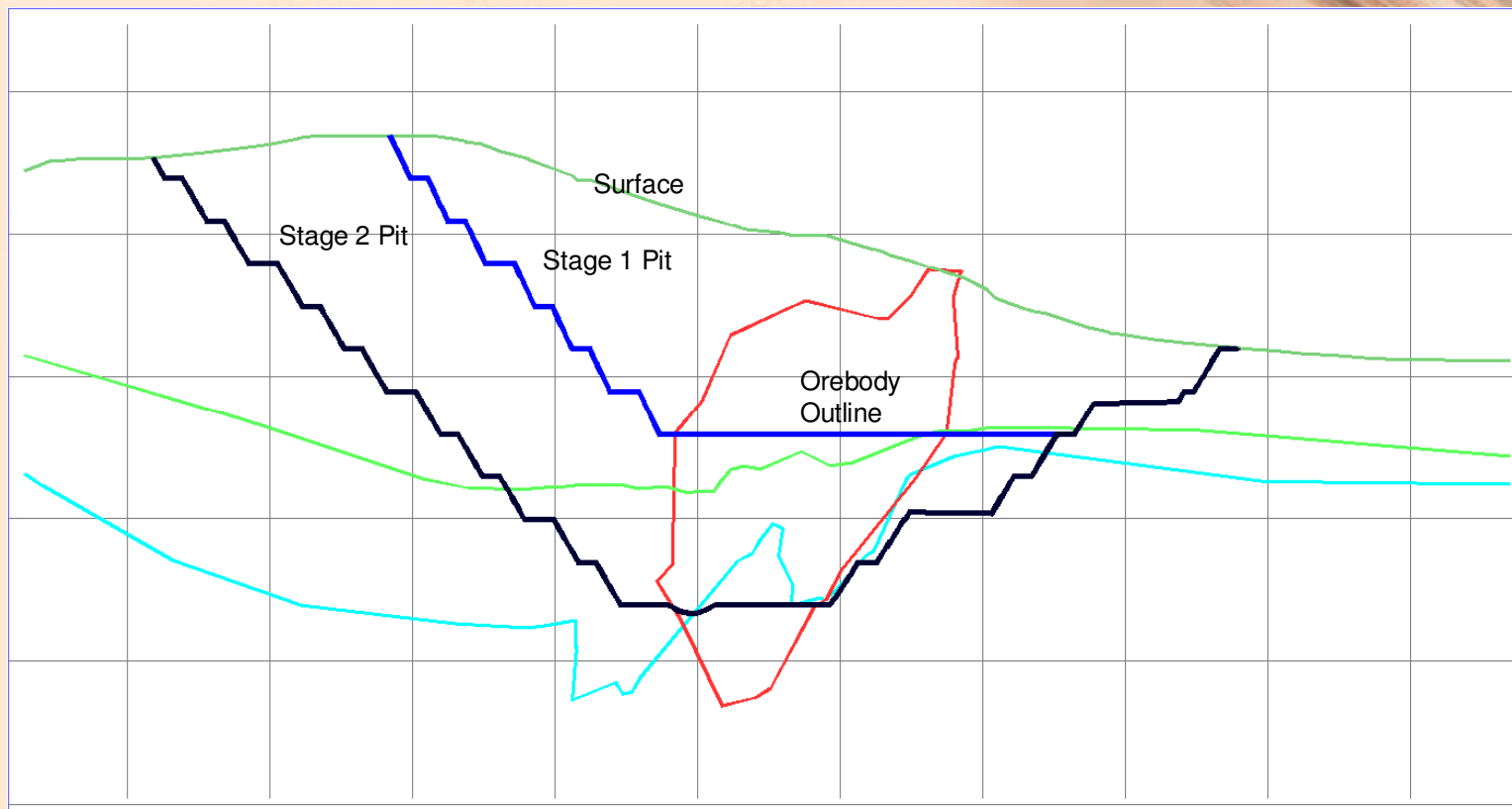


Kipoi Central Copper Project

- Initial Capital <\$100M
- Opex <\$1,500/t (<\$0.70/lb)
- 18 month finance & development plan
- Project self funding after initial Capital
- Current Sales 92-95% LME black Cu
- Stage 1 Copper sales 35,000tpa

Kipoi Central Copper Project

Pit Cross Section



Kipoi Central Copper Project

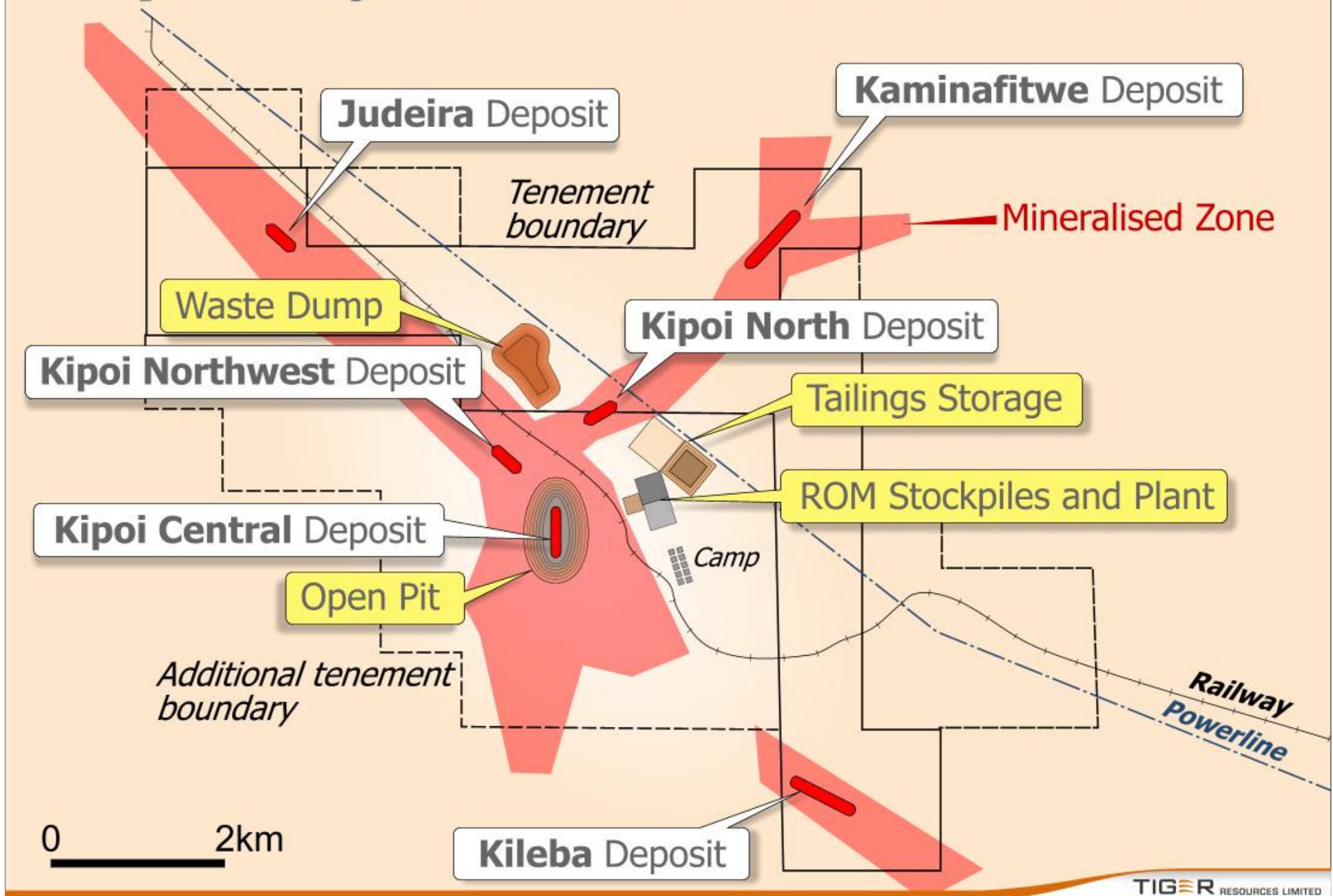
- Stage 1 Pit
 - Developed on identified high grade zone (+7%Cu)
 - Current life 2.5yrs
 - HMS sized to process 800,000tpa of +6% Cu with
 - recovery of Cu to 25% concentrate above 55%
 - 35,000tpa blister Cu production.
 - Capital costs estimated at @ US\$60 million
 - Aiming for production in 2009

Kipoi Central Copper Project

Stage 1 Pit Layout



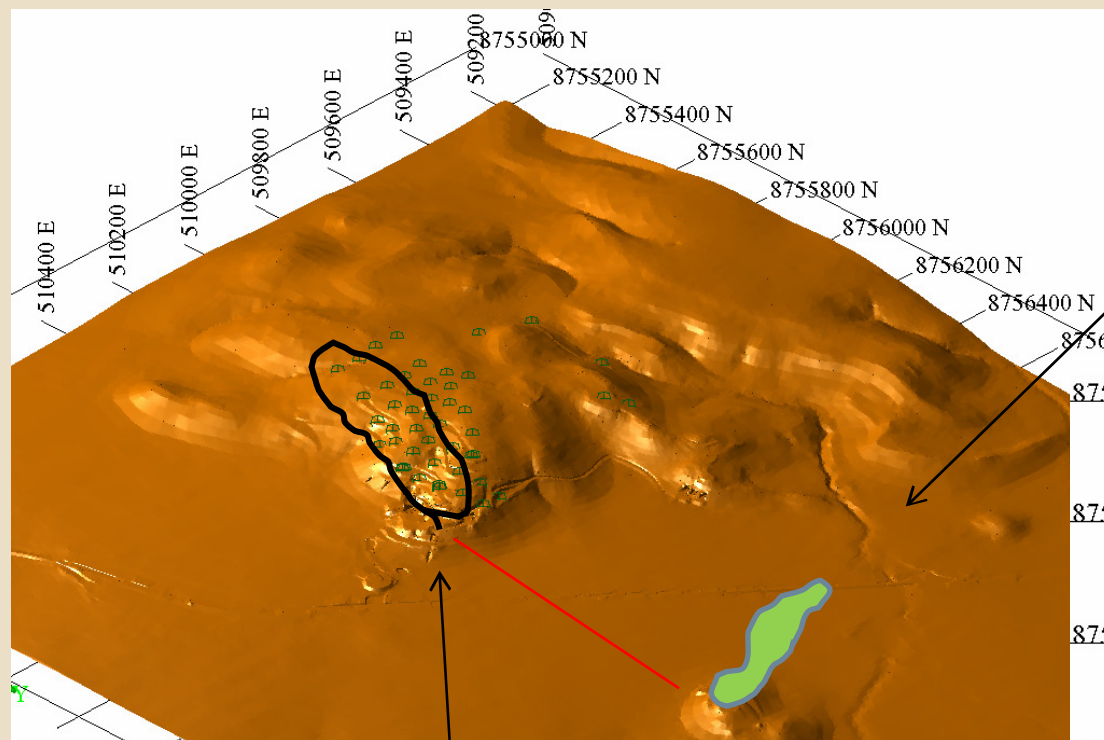
Kipoi Project Mine, Plant and Infrastructure



Kipoi North Deposit

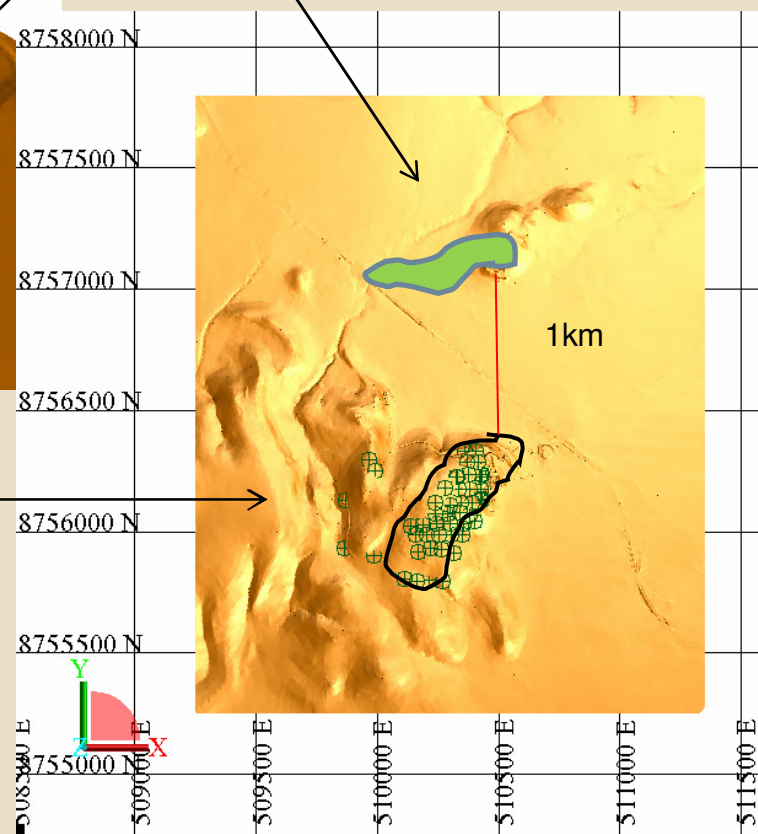


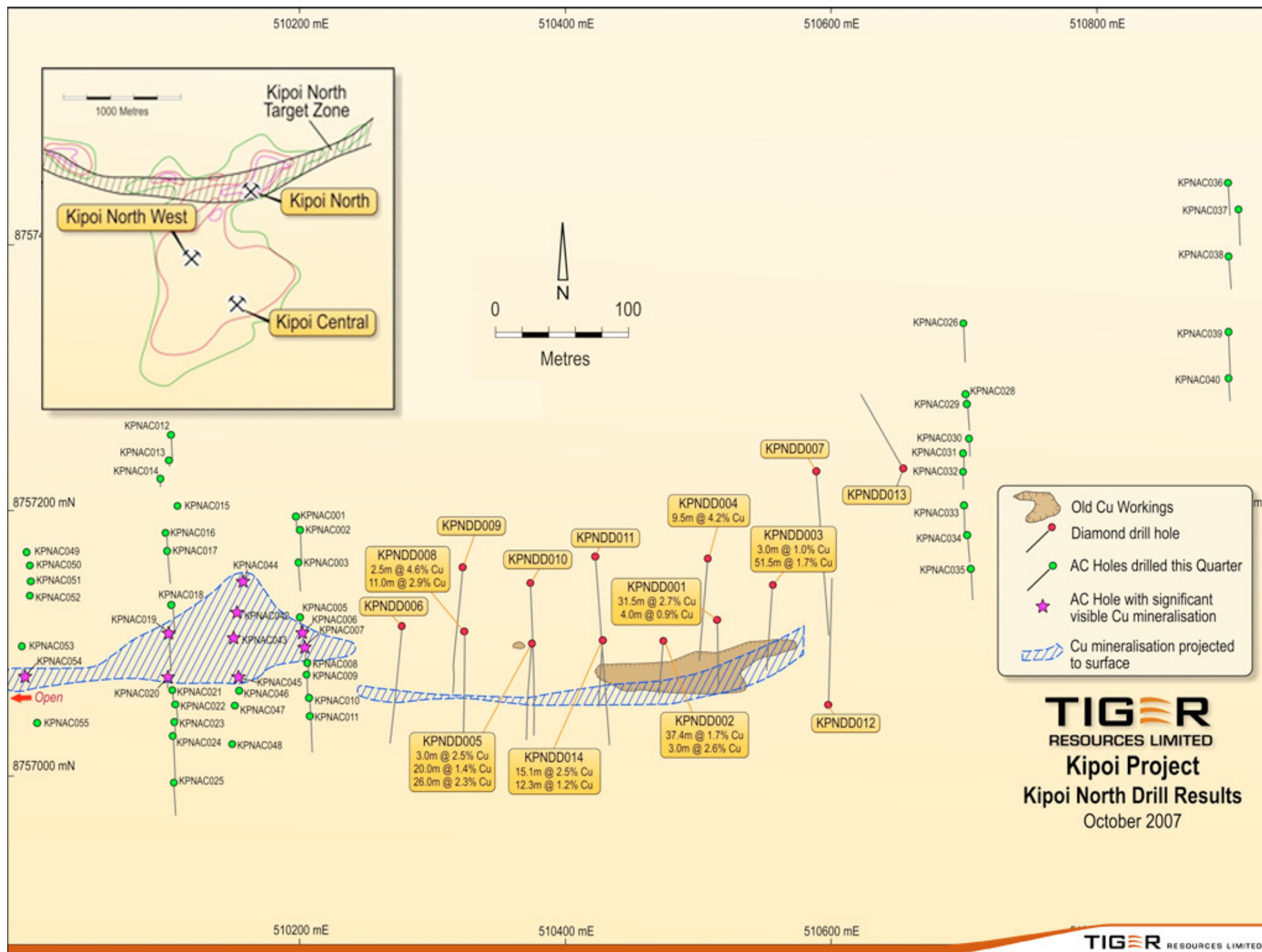
Kipoi Central Topography



Kipoi North Inferred Ore Zone

Kipoi Central Ore Zone





Tiger Resources . .

Kipoi North; 500m open strike deposit

- 1km north of Kipoi Central
 - KPNRC003: 80.0m @ 2.4% Cu (includes 9m @ 5.5% Cu and 11m @ 4.6% Cu)
- Resource statement out in June quarter 08

Kileba; two diamond rigs to site

- Strike of some 1.2kms
 - 40m @ 2.24% Cu channel sample
 - 76m @ 1.04% Cu trench sample

Project Development to 2015

2006-07

Exploration
Resource drilling
Feasibility

2007 -09

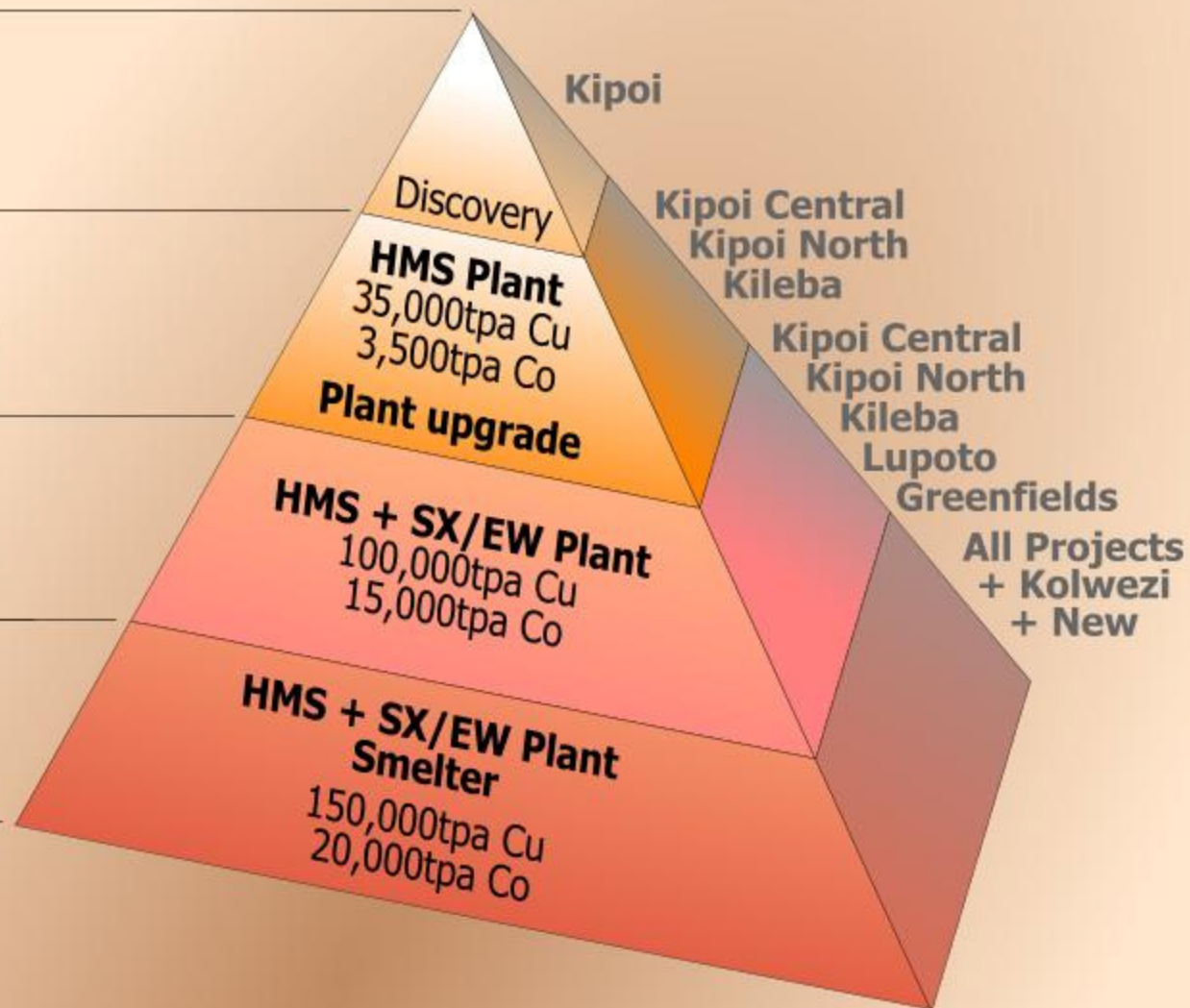
Exploration
Resource drilling and definition
Plant Upgrade to SX/EW

2009 -11

Resource Expansion
Smelter Feasibility
Mine Development

2011-15

New Projects
Smelter Feasibility
Mine Development



Security



Joseph Kabila
President

The road to peace, stability & economic freedom

Since 2000

Full United Nations support with peacekeepers and administration

New Mining Code introduced - 2003

Free and fair elections - 2006

Review of mining contracts with Government agencies announced - 2007

Comprehensive peace deal - 2008

Review of mining contracts; companies notified and their requirements released - 2008

Investment



Joseph Kabila
President

The road to peace, stability & economic freedom

Since 2000

China investing +US\$5billion in mining & infrastructure
- mainly in rail, roads and other hard infrastructure

Multi billion dollar Regional Spatial Development Initiatives Programme (RSDIP) investment into DRC a South African government programme aiming to promote economic cooperation

BHP Billiton investing US\$20million in Inga Dam upgrade feasibility study, potentially leading to US\$3billion Alumina/Aluminium plants

Katanga Mining and Camac have 30% ownership structure with Gecamines confirmed by the DRC mining review process

Lease Structures

- Tiger Resources approached to participate in Kipoi Project – HOA signed in early 2006
- Project owned 60% Congo Minerals / 40% Gecamines
- Tiger has 13% of JV partner Congo minerals' holding at Kipoi
- On delivery of BFS in June 2009, Tiger will commence to acquire remaining Congo Minerals stake
 - Within 6 months - \$US10million
 - Within 10 months after the first payment, remaining US\$12million to be paid
- Congo Minerals involved in food, fuel, communications, and mineral processing activities in the DRC –not mine development
- Separate agreement for Aurum JV leases, no Government involvement at this stage